

## The impact of ESG on MBS performance and prepayment



April 2023

The incorporation of sustainability and social responsibility measures into investment practices has often been handled separately from traditional financial assessment; however, in this publication we demonstrate that ESG considerations can provide significant value when integrated into workflows.

Last year, Yield Book introduced a quantitative-based methodology for agency residential mortgage-backed security (RMBS) assets, producing ESG-focused metrics that analyzed and measured entities' Responsible Lending and Responsible Servicing behaviors and applying this at a security level. Market participants can use this information to identify mortgage pools that meet certain criteria. In this paper we show that the same information correlates to investment performance.

This publication focuses on prepayment behavior across the dimension of these socially oriented lending and servicing traits. We present the results through several common visualizations, including a correlation study, S-curves, weighted average loan age (WALA) ramps and a total return analysis. Our goal is to assist investors in identifying mortgage-backed security (MBS) pools that contain loans originated or serviced along commonly accepted social criteria and to support investment decisions with the benefit of observing prior results.

The study includes performance and prepayment information for each individual ESG metric, as well as aggregated loan attributes outside of ESG.

Our research highlights significant dispersion in the prepayment behavior of ESG cohorts and cannot be attributed to other collateral characteristics typically used in prepayment models. We find that investing based on Yield Book's ESG metrics generally leads to better financial performance and, in most cases, ESG MBS cohorts are observed to prepay more slowly.

### AUTHORS

**Marina Manoim**  
Quantitative MBS Modeling Data Lead  
[marina.manoim@lseg.com](mailto:marina.manoim@lseg.com)

**Irene Shi**  
Quant Data Analyst Manager  
[Irene.shi@lseg.com](mailto:Irene.shi@lseg.com)

### CONTRIBUTORS

**Octavian Ceban**  
Senior Analyst, Research

**Joseph Corrado**  
RMBS Data Scientist

**Hui Ding**  
Head of Agency RMBS Research

**Vlad-Ionut Ene**  
Senior Analyst, Product

**Jake Katz**  
Head of Non-Agency RMBS Research  
and Data Science

**Katie Prideaux**  
Head of Sustainable Investment  
Analytics Product

# Contents

---

|  |    |
|--|----|
| Yield Book's ESG Metric Methodology overview .....     | 3  |
| Total return analysis.....                             | 7  |
| S-curves and WALA ramps.....                           | 10 |
| Metric distribution and CPR regression by entity ..... | 15 |
| Conclusion .....                                       | 18 |

## Yield Book's ESG Metric Methodology overview

Last year, Yield Book launched a set of ESG metrics intended to facilitate detection of negative and positive behaviors in a servicing and lending context based on loan-level data; a summary of each metric is given below. We then investigate these metrics' connection to financial performance.

For additional information on our Sustainable Investment Analytics solutions, please visit [Sustainable Investment Analytics | Yield Book](#)

### Responsible servicing

Responsible behavior in a servicing context is the practice of extending fair and reasonable terms to borrowers during the servicing process. To facilitate the measurement of – and to highlight the extent of – potentially predatory practices within a deal or market segment, we have developed quantitative-based metrics.

#### Responsible delinquency policy

Positive behaviors can be observed when the servicer actively attempts to seek modification with the borrower to prevent foreclosure and other routes such as default and buyout, particularly prior to legally enforced deadlines. This measure shows servicers' willingness to provide positive outcomes for the borrower by helping them avoid incurring further debt or losing their home.

#### Relative default rate

Foreclosure is the ultimate worst outcome for both the borrower and the servicer. It is a costly legal process usually avoided by the servicer and becomes a major credit issue for the borrower; however, a relatively high value in combination with other characteristics could also indicate an unwillingness to engage in alternative options for the borrower.

#### Loan churn

Loan churn is understood to be the process of encouraging borrowers to refinance repeatedly in a short timeframe following the origination of their loan with little benefit to the borrower, with the servicer benefiting from these administrative fees at each refinance.

### Responsible Lending

Responsible behavior in a lending context is the practice of extending fair and reasonable terms to borrowers during the loan origination process. To facilitate the measurement of – and to highlight the extent of – potentially predatory practices within a deal or market segment, we have developed quantitative-based metrics.

#### Outsized rates

This metric provides a measure of a lender's overall deviation from the population for the interest rates extended to borrowers. We developed a benchmark for prediction of spread at origination (SATO) given input characteristics at each point in time, based on a linear regression model to obtain coefficients of the various inputs across loan-level data from 2010-2021. Each lender's distribution is then compared to the population through a density comparison.

#### Early pay default risk

A mortgage loan is considered to have substantial early payment default risk (EPDR) if it displays delinquency above a threshold period within a relatively short timeframe following loan origination. While this can occur even with the involved parties acting responsibly during loan origination, prevalence of early delinquency situations in recently originated loans for a specific lender's production highlights a potential inclination towards predatory behavior.

#### Irresponsible lending

Irresponsible lending, a predatory behavior on the part of the lender, is defined by the consistent offering of loans to borrowers with high-risk credentials. This can result in the borrower facing default risks, falling behind on existing commitments and experiencing financial hardship. This behavior expressed in regard to loans with poor credit is identified by looking at the consistent extension of credit to high-risk borrowers relative to other lenders within either a deal or

market segment, in combination with default rates. We note that lending to risky borrowers is not predatory – this is of course required for healthily functioning markets – but is an issue to be highlighted if it occurs consistently and over a long period.

We focus on the 12 months averaged pool-level versions of the metrics for this analysis.

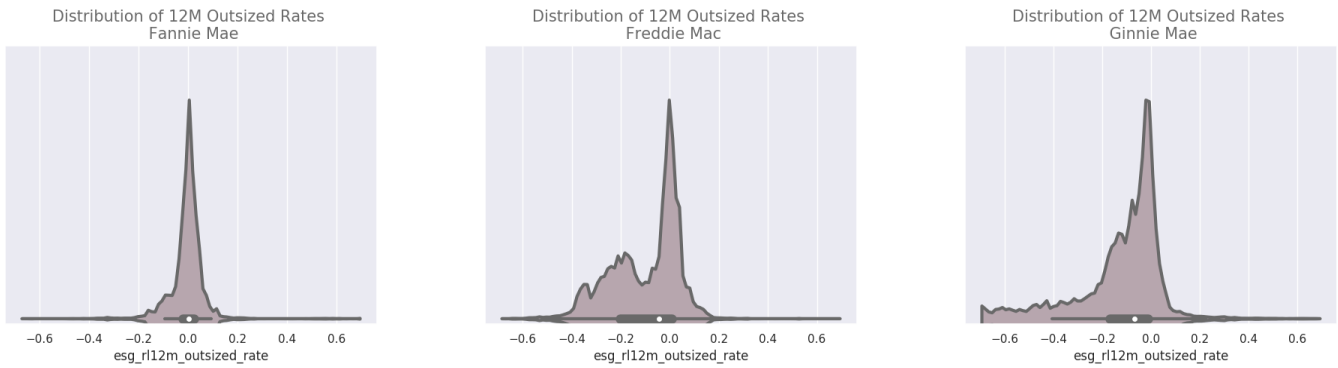
### **ESG metric distributions**

Figures 1 and 2 below show the distribution of pool-level metrics across all three agencies: GNMA, FNMA and FHLMC. Distributions are shown via violin plots demonstrating both summary statistics (first quartile, median, third quartile) and the kernel density of the values for each of the metrics.



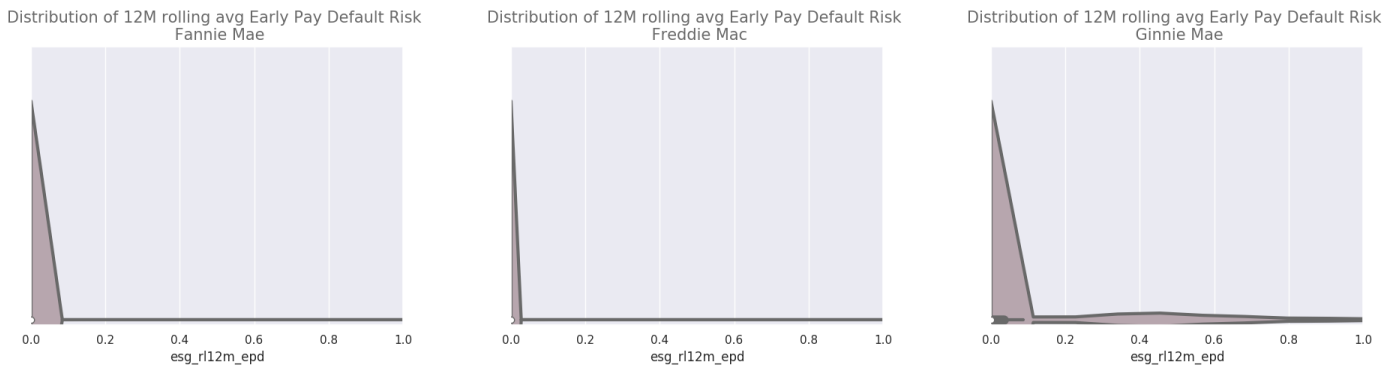
## Figure 1. Distributions of responsible lending scores

### Figure 1a. Outsized rates (OR)

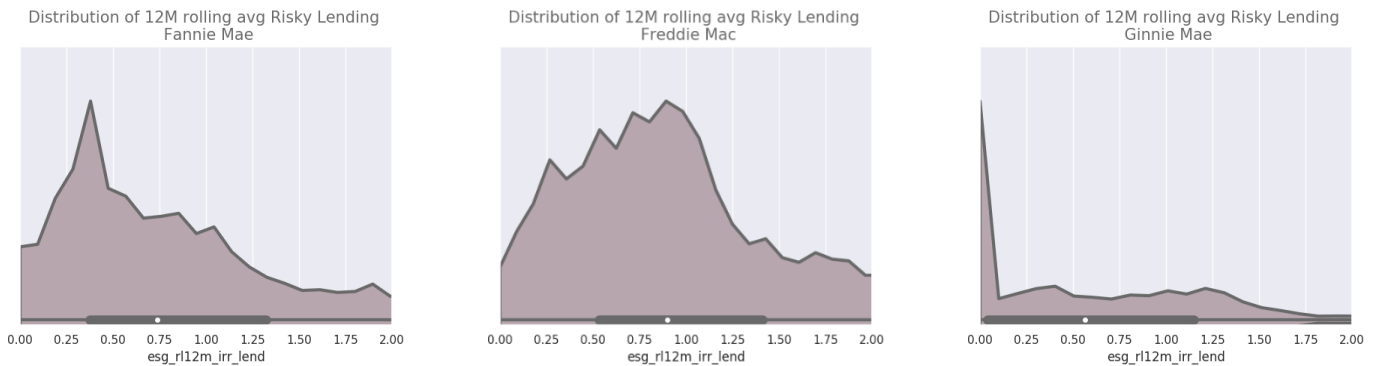


The distributions of early pay default risk seen below clearly visualize the different collateral credit quality and lending practices for FNMA and FHLMC vs GNMA.

### Figure 1b. Early pay default risk (EPDR)



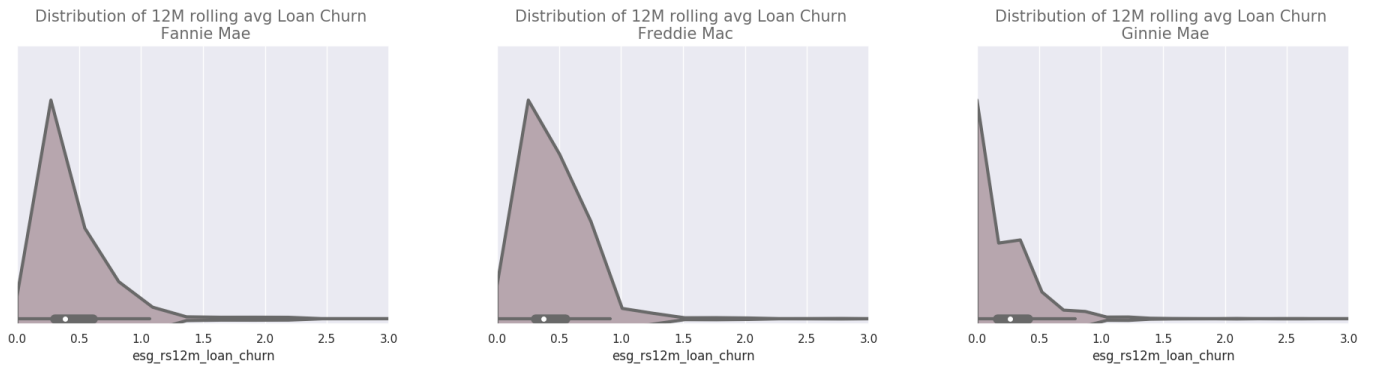
### Figure 1c. Risky lending (RL)



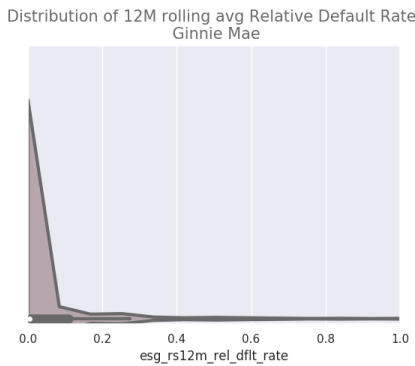
Source: Yield Book

## Figure 2. Distributions of responsible servicing scores

### Figure 2a. Loan churn (LC)

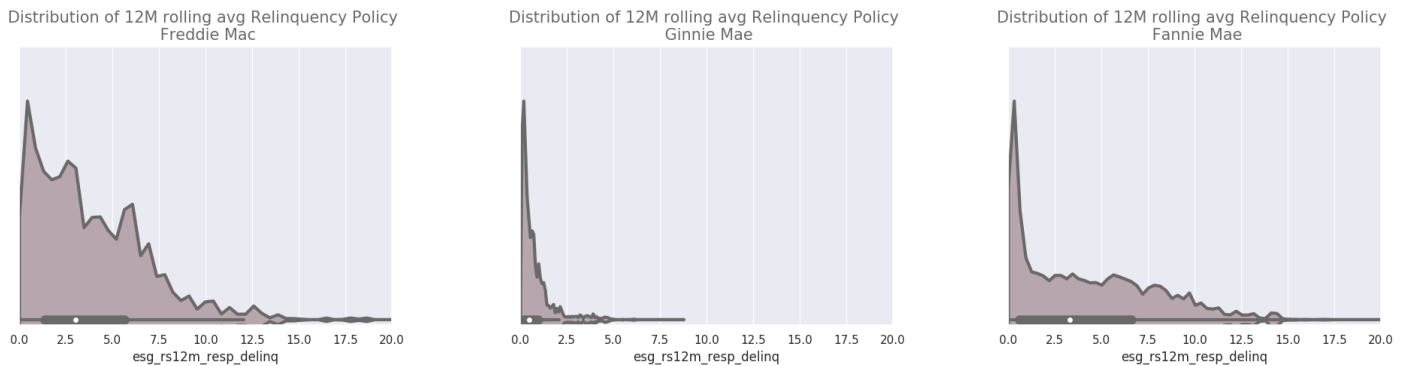


### Figure 2b. Relative default rate (RDR)



On the delinquency policy charts below, we see again the different servicing practices of government-sponsored enterprises vs GNMA. For this metric, higher values indicate more responsible practices.

### Figure 2c. Delinquency policy (DP)



Source: Yield Book

# Total return analysis

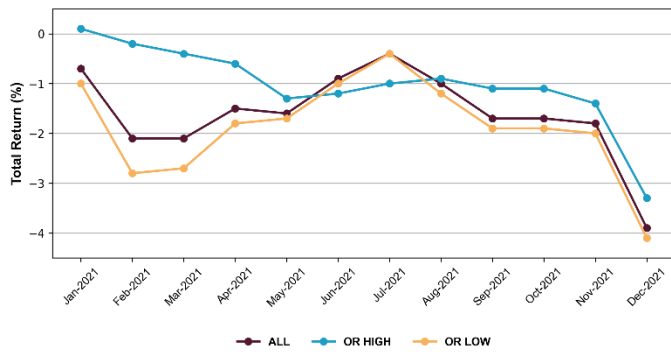
The charts in Figures 3 and 4 show the moving time window of two months' total returns on the investment for the universe of FNMA mortgage pools.

The results in Tables 1 and 2 show total return for two-month periods assuming various risk-free rates. The investment universe is segmented into two sub-cohorts (low and high) for each ESG metric. The sub-cohorts are split at the weighted average value of the pool-level metrics (weighted by the current balance of the pool).

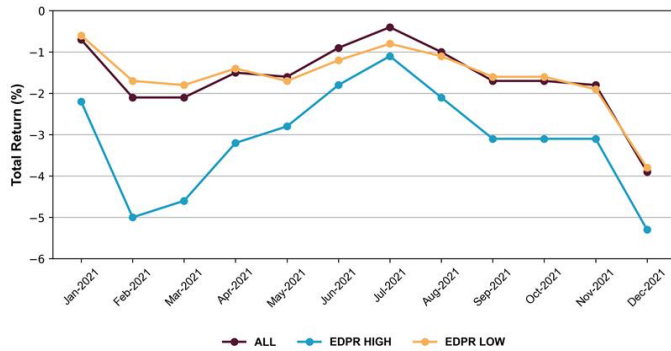
On the responsible lending side, the charts and more detailed data in Table 1 show that investing in cohorts with lower EDPR scores or lower risky lending scores on average produce higher total returns. Since the higher outsized rate score is indicative of higher loan rates, investing in those cohorts predictably produces higher returns.

**Figure 3: Total return graphs by ESG RL cohorts (with 0.1 risk-free rate)**

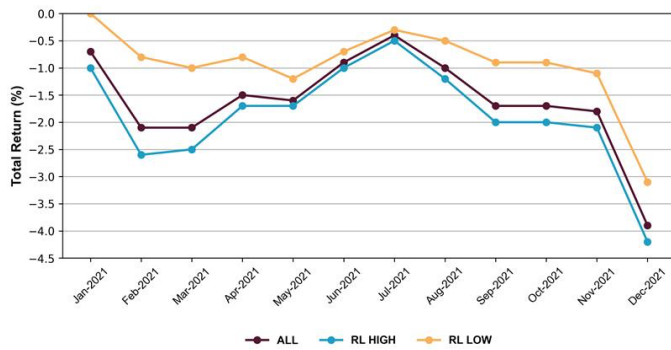
**Figure 3a: Total return graph outsized rates (OR)**



**Figure 3b: Total return graph early pay default risk (EPDR)**



**Figure 3c: Total return graph risky lending (RL)**



**Table 1: Total return by ESG RL cohorts**

| Risk free rate (%) | Cohort type | Total return for the two months period |        |        |        |        |        |        |        |        |        |        |        |        |
|--------------------|-------------|--|--------|--------|--------|--------|--------|--------|--------|--------|--------|--------|--------|--------|
|                    |             | Jan-21                                 | Feb-21 | Mar-21 | Apr-21 | May-21 | Jun-21 | Jul-21 | Aug-21 | Sep-21 | Oct-21 | Nov-21 | Dec-21 | Avg    |
| 0.1                | ALL         | -0.73%                                 | -1.40% | 0.02%  | 0.65%  | -0.11% | 0.64%  | 0.48%  | -0.59% | -0.64% | -0.01% | -0.15% | -2.06% | -0.33% |
| 0.1                | EPDR HIGH   | -2.17%                                 | -2.80% | 0.34%  | 1.47%  | 0.36%  | 1.03%  | 0.64%  | -1.02% | -0.99% | 0.03%  | 0.04%  | -2.22% | -0.44% |
| 0.1                | EPDR LOW    | -0.58%                                 | -1.15% | -0.06% | 0.41%  | -0.29% | 0.47%  | 0.39%  | -0.34% | -0.42% | -0.04% | -0.30% | -1.92% | -0.32% |
| 0.1                | RL HIGH     | -0.98%                                 | -1.62% | 0.09%  | 0.82%  | -0.02% | 0.70%  | 0.50%  | -0.69% | -0.75% | -0.01% | -0.12% | -2.09% | -0.35% |
| 0.1                | RL LOW      | -0.03%                                 | -0.76% | -0.20% | 0.19%  | -0.37% | 0.49%  | 0.40%  | -0.27% | -0.34% | -0.01% | -0.25% | -1.98% | -0.26% |
| 0.1                | OR HIGH     | 0.13%                                  | -0.31% | -0.23% | -0.22% | -0.69% | 0.09%  | 0.26%  | 0.01%  | -0.16% | 0.01%  | -0.34% | -1.90% | -0.28% |
| 0.1                | OR LOW      | -1.02%                                 | -1.74% | 0.09%  | 0.89%  | 0.03%  | 0.77%  | 0.53%  | -0.71% | -0.75% | -0.02% | -0.10% | -2.11% | -0.34% |
| 1.0                | ALL         | -0.72%                                 | -1.39% | 0.02%  | 0.66%  | -0.11% | 0.65%  | 0.49%  | -0.58% | -0.64% | -0.01% | -0.15% | -2.06% | -0.32% |
| 1.0                | EPDR HIGH   | -2.17%                                 | -2.80% | 0.34%  | 1.48%  | 0.36%  | 1.03%  | 0.65%  | -1.01% | -0.99% | 0.03%  | 0.04%  | -2.21% | -0.44% |
| 1.0                | EPDR LOW    | -0.56%                                 | -1.15% | -0.05% | 0.42%  | -0.28% | 0.48%  | 0.40%  | -0.33% | -0.41% | -0.03% | -0.30% | -1.92% | -0.31% |
| 1.0                | RL HIGH     | -0.97%                                 | -1.61% | 0.10%  | 0.82%  | -0.02% | 0.70%  | 0.51%  | -0.69% | -0.74% | -0.01% | -0.12% | -2.08% | -0.34% |
| 1.0                | RL LOW      | -0.02%                                 | -0.76% | -0.19% | 0.20%  | -0.36% | 0.50%  | 0.41%  | -0.27% | -0.33% | 0.00%  | -0.24% | -1.97% | -0.25% |
| 1.0                | OR HIGH     | 0.14%                                  | -0.30% | -0.22% | -0.21% | -0.68% | 0.10%  | 0.27%  | 0.02%  | -0.15% | 0.01%  | -0.34% | -1.90% | -0.27% |
| 1.0                | OR LOW      | -1.01%                                 | -1.73% | 0.10%  | 0.89%  | 0.04%  | 0.78%  | 0.53%  | -0.71% | -0.74% | -0.01% | -0.10% | -2.10% | -0.34% |
| 2.0                | ALL         | -0.71%                                 | -1.39% | 0.03%  | 0.67%  | -0.10% | 0.66%  | 0.49%  | -0.58% | -0.63% | 0.00%  | -0.14% | -2.05% | -0.31% |
| 2.0                | EPDR HIGH   | -2.17%                                 | -2.80% | 0.34%  | 1.48%  | 0.36%  | 1.03%  | 0.65%  | -1.01% | -0.98% | 0.04%  | 0.04%  | -2.21% | -0.44% |
| 2.0                | EPDR LOW    | -0.56%                                 | -1.15% | -0.04% | 0.43%  | -0.27% | 0.49%  | 0.41%  | -0.33% | -0.40% | -0.03% | -0.29% | -1.91% | -0.30% |
| 2.0                | RL HIGH     | -0.96%                                 | -1.61% | 0.11%  | 0.83%  | -0.01% | 0.71%  | 0.52%  | -0.68% | -0.73% | 0.00%  | -0.11% | -2.08% | -0.34% |
| 2.0                | RL LOW      | -0.01%                                 | -0.75% | -0.18% | 0.21%  | -0.35% | 0.50%  | 0.42%  | -0.26% | -0.33% | 0.00%  | -0.24% | -1.97% | -0.25% |
| 2.0                | OR HIGH     | 0.15%                                  | -0.30% | -0.21% | -0.19% | -0.67% | 0.11%  | 0.28%  | 0.03%  | -0.14% | 0.02%  | -0.33% | -1.89% | -0.26% |
| 2.0                | OR LOW      | -1.00%                                 | -1.73% | 0.10%  | 0.90%  | 0.04%  | 0.78%  | 0.54%  | -0.70% | -0.74% | -0.01% | -0.09% | -2.10% | -0.33% |
| 3.0                | ALL         | -0.70%                                 | -1.38% | 0.04%  | 0.67%  | -0.09% | 0.66%  | 0.50%  | -0.57% | -0.62% | 0.01%  | -0.14% | -2.05% | -0.31% |
| 3.0                | EPDR HIGH   | -2.17%                                 | -2.80% | 0.35%  | 1.48%  | 0.37%  | 1.04%  | 0.65%  | -1.01% | -0.98% | 0.04%  | 0.05%  | -2.21% | -0.43% |
| 3.0                | EPDR LOW    | -0.55%                                 | -1.14% | -0.02% | 0.44%  | -0.27% | 0.49%  | 0.42%  | -0.32% | -0.39% | -0.02% | -0.28% | -1.91% | -0.30% |
| 3.0                | RL HIGH     | -0.95%                                 | -1.61% | 0.12%  | 0.83%  | -0.01% | 0.71%  | 0.52%  | -0.68% | -0.73% | 0.00%  | -0.11% | -2.07% | -0.33% |
| 3.0                | RL LOW      | 0.01%                                  | -0.75% | -0.17% | 0.21%  | -0.35% | 0.51%  | 0.42%  | -0.25% | -0.32% | 0.01%  | -0.23% | -1.96% | -0.24% |
| 3.0                | OR HIGH     | 0.17%                                  | -0.29% | -0.20% | -0.18% | -0.66% | 0.12%  | 0.29%  | 0.04%  | -0.13% | 0.03%  | -0.32% | -1.89% | -0.25% |
| 3.0                | OR LOW      | -0.99%                                 | -1.73% | 0.11%  | 0.91%  | 0.05%  | 0.79%  | 0.54%  | -0.70% | -0.73% | 0.00%  | -0.09% | -2.09% | -0.33% |
| 4.0                | ALL         | -0.68%                                 | -1.38% | 0.05%  | 0.68%  | -0.09% | 0.67%  | 0.50%  | -0.56% | -0.62% | 0.01%  | -0.13% | -2.04% | -0.30% |
| 4.0                | EPDR HIGH   | -2.17%                                 | -2.80% | 0.35%  | 1.48%  | 0.37%  | 1.04%  | 0.65%  | -1.00% | -0.98% | 0.04%  | 0.05%  | -2.20% | -0.43% |
| 4.0                | EPDR LOW    | -0.54%                                 | -1.14% | -0.01% | 0.45%  | -0.26% | 0.50%  | 0.43%  | -0.31% | -0.38% | -0.01% | -0.28% | -1.90% | -0.29% |
| 4.0                | RL HIGH     | -0.94%                                 | -1.60% | 0.13%  | 0.84%  | 0.00%  | 0.72%  | 0.53%  | -0.67% | -0.72% | 0.01%  | -0.10% | -2.07% | -0.32% |
| 4.0                | RL LOW      | 0.02%                                  | -0.75% | -0.16% | 0.22%  | -0.34% | 0.52%  | 0.43%  | -0.25% | -0.31% | 0.01%  | -0.23% | -1.96% | -0.23% |
| 4.0                | OR HIGH     | 0.18%                                  | -0.29% | -0.18% | -0.17% | -0.65% | 0.13%  | 0.30%  | 0.05%  | -0.12% | 0.04%  | -0.32% | -1.88% | -0.24% |
| 4.0                | OR LOW      | -0.98%                                 | -1.72% | 0.12%  | 0.91%  | 0.05%  | 0.79%  | 0.55%  | -0.69% | -0.72% | 0.01%  | -0.08% | -2.09% | -0.32% |
| 5.0                | ALL         | -0.67%                                 | -1.38% | 0.06%  | 0.69%  | -0.08% | 0.67%  | 0.51%  | -0.56% | -0.61% | 0.02%  | -0.13% | -2.04% | -0.29% |
| 5.0                | EPDR HIGH   | -2.16%                                 | -2.80% | 0.35%  | 1.48%  | 0.37%  | 1.04%  | 0.66%  | -1.00% | -0.97% | 0.04%  | 0.05%  | -2.20% | -0.43% |
| 5.0                | EPDR LOW    | -0.52%                                 | -1.13% | 0.00%  | 0.45%  | -0.25% | 0.51%  | 0.43%  | -0.30% | -0.38% | 0.00%  | -0.27% | -1.89% | -0.28% |
| 5.0                | RL HIGH     | -0.93%                                 | -1.60% | 0.14%  | 0.85%  | 0.01%  | 0.73%  | 0.53%  | -0.66% | -0.71% | 0.02%  | -0.09% | -2.06% | -0.32% |
| 5.0                | RL LOW      | 0.03%                                  | -0.74% | -0.15% | 0.23%  | -0.33% | 0.52%  | 0.44%  | -0.24% | -0.31% | 0.02%  | -0.22% | -1.95% | -0.22% |
| 5.0                | OR HIGH     | 0.19%                                  | -0.28% | -0.17% | -0.16% | -0.64% | 0.14%  | 0.31%  | 0.06%  | -0.12% | 0.04%  | -0.31% | -1.87% | -0.23% |
| 5.0                | OR LOW      | -0.97%                                 | -1.72% | 0.13%  | 0.92%  | 0.06%  | 0.80%  | 0.55%  | -0.68% | -0.72% | 0.01%  | -0.08% | -2.08% | -0.32% |

On the responsible servicing side, the charts and more detailed data in Table 2 show that investing in cohorts with lower loan churn scores also, on average, produce higher total returns.

Due to the agencies' disclosure content, there is no sufficient data available to complete a similar analysis for relative default rate scores and delinquency policy scores.

Figure 4: Total return graph by ESG RS cohorts loan churn (LC) (with 0.1 risk-free rate)

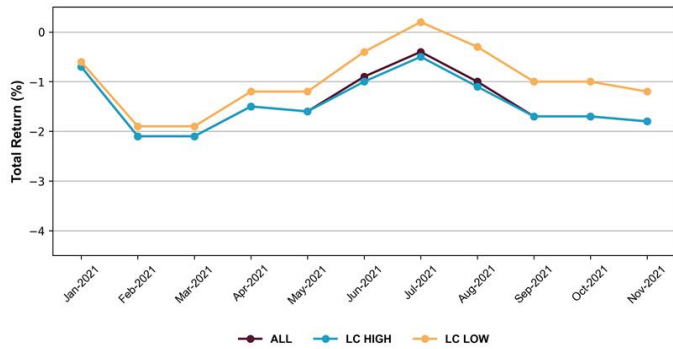


Table 2: Total return by RS ESG cohorts

| Risk free rate (%) | Cohort type | Total return for the two months period |        |        |        |        |        |        |        |        |        |        |        |        |
|--------------------|-------------|--|--------|--------|--------|--------|--------|--------|--------|--------|--------|--------|--------|--------|
|                    |             | Jan-21                                 | Feb-21 | Mar-21 | Apr-21 | May-21 | Jun-21 | Jul-21 | Aug-21 | Sep-21 | Oct-21 | Nov-21 | Dec-21 | Avg    |
| 0.1                | ALL         | -0.73%                                 | -1.40% | 0.02%  | 0.65%  | -0.11% | 0.64%  | 0.48%  | -0.59% | -0.64% | -0.01% | -0.15% | -2.06% | -0.33% |
| 0.1                | LC HIGH     | -0.73%                                 | -1.40% | 0.02%  | 0.65%  | -0.12% | 0.63%  | 0.45%  | -0.60% | -0.56% | -0.01% | -0.09% | -2.02% | -0.32% |
| 0.1                | LC LOW      | -0.58%                                 | -1.34% | 0.04%  | 0.68%  | -0.02% | 0.81%  | 0.63%  | -0.53% | -0.68% | -0.01% | -0.16% | -2.06% | -0.27% |
| 1.0                | ALL         | -0.72%                                 | -1.39% | 0.02%  | 0.66%  | -0.11% | 0.65%  | 0.49%  | -0.58% | -0.64% | -0.01% | -0.15% | -2.06% | -0.32% |
| 1.0                | LC HIGH     | -0.72%                                 | -1.39% | 0.02%  | 0.66%  | -0.11% | 0.64%  | 0.46%  | -0.60% | -0.55% | -0.01% | -0.08% | -2.02% | -0.31% |
| 1.0                | LC LOW      | -0.57%                                 | -1.34% | 0.04%  | 0.69%  | -0.01% | 0.81%  | 0.63%  | -0.53% | -0.68% | -0.01% | -0.16% | -2.06% | -0.26% |
| 2.0                | ALL         | -0.71%                                 | -1.39% | 0.03%  | 0.67%  | -0.10% | 0.66%  | 0.49%  | -0.58% | -0.63% | 0.00%  | -0.14% | -2.05% | -0.31% |
| 2.0                | LC HIGH     | -0.71%                                 | -1.39% | 0.03%  | 0.66%  | -0.11% | 0.64%  | 0.46%  | -0.59% | -0.55% | 0.00%  | -0.08% | -2.01% | -0.30% |
| 2.0                | LC LOW      | -0.56%                                 | -1.34% | 0.05%  | 0.69%  | -0.01% | 0.82%  | 0.63%  | -0.52% | -0.67% | 0.00%  | -0.15% | -2.05% | -0.26% |
| 3.0                | ALL         | -0.70%                                 | -1.38% | 0.04%  | 0.67%  | -0.09% | 0.66%  | 0.50%  | -0.57% | -0.62% | 0.01%  | -0.14% | -2.05% | -0.31% |
| 3.0                | LC HIGH     | -0.70%                                 | -1.39% | 0.04%  | 0.67%  | -0.10% | 0.65%  | 0.47%  | -0.58% | -0.54% | 0.01%  | -0.07% | -2.01% | -0.30% |
| 3.0                | LC LOW      | -0.55%                                 | -1.34% | 0.06%  | 0.70%  | -0.01% | 0.82%  | 0.64%  | -0.52% | -0.67% | 0.01%  | -0.14% | -2.05% | -0.25% |
| 4.0                | ALL         | -0.68%                                 | -1.38% | 0.05%  | 0.68%  | -0.09% | 0.67%  | 0.50%  | -0.56% | -0.62% | 0.01%  | -0.13% | -2.04% | -0.30% |
| 4.0                | LC HIGH     | -0.69%                                 | -1.38% | 0.05%  | 0.68%  | -0.09% | 0.66%  | 0.48%  | -0.58% | -0.53% | 0.01%  | -0.07% | -2.00% | -0.29% |
| 4.0                | LC LOW      | -0.55%                                 | -1.33% | 0.06%  | 0.70%  | 0.00%  | 0.83%  | 0.64%  | -0.51% | -0.66% | 0.01%  | -0.14% | -2.04% | -0.25% |
| 5.0                | ALL         | -0.67%                                 | -1.38% | 0.06%  | 0.69%  | -0.08% | 0.67%  | 0.51%  | -0.56% | -0.61% | 0.02%  | -0.13% | -2.04% | -0.29% |
| 5.0                | LC HIGH     | -0.68%                                 | -1.38% | 0.06%  | 0.69%  | -0.09% | 0.66%  | 0.48%  | -0.57% | -0.52% | 0.02%  | -0.06% | -1.99% | -0.28% |
| 5.0                | LC LOW      | -0.54%                                 | -1.33% | 0.07%  | 0.71%  | 0.00%  | 0.83%  | 0.65%  | -0.51% | -0.66% | 0.02%  | -0.13% | -2.04% | -0.24% |

# S-curves and WALA ramps

In the charts that follow, we present side-by-side graphs for various combinations of agency and RL/RS metrics. Each row of graphs has an S-curve on the left and a WALA ramp on the right.

The **S-curves** graph prepayment rates based on interest rate incentive experienced for 30-year FRM MBS cohorts for 2021-2022 factor dates.

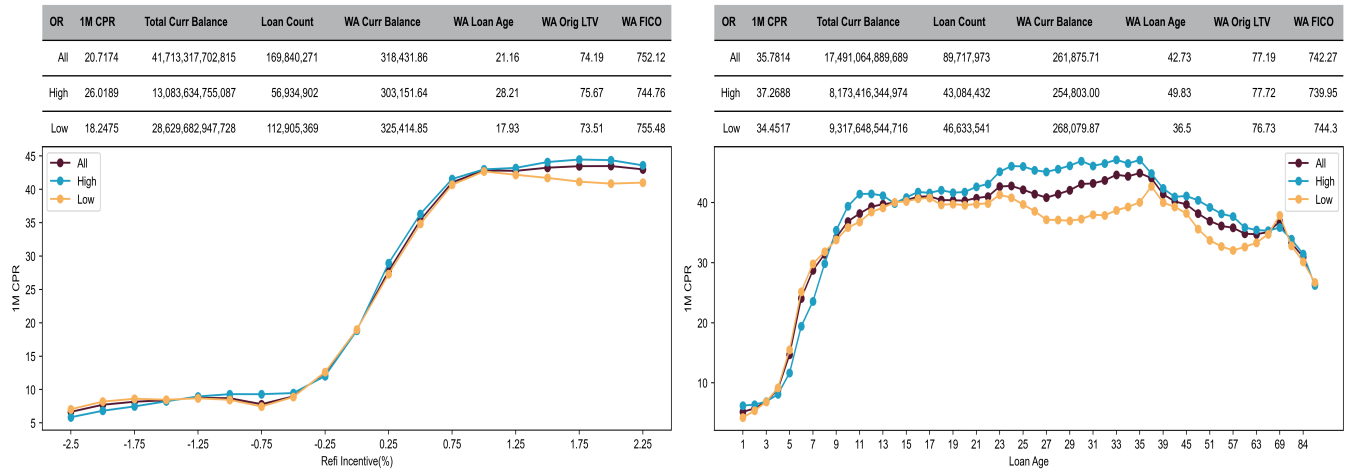
The **WALA ramps** plot prepayment seasoning for 30-year FRM MBS cohorts for 2021-2022 factor dates.

For each ESG metric, we have created two loan-level cohorts: high and low. The high cohort contains all loans with ESG scores above the balance weighted average of the ESG score. The low cohort is the complementary set. We could not produce graphs for all metrics because certain metrics highlight rare events and lack sufficient differentiation to create cohorts of adequate size – for example, EPDR events for FNMA loans.

**Figure 5: Responsible lending metrics**

For outsized rates, higher score cohorts (the part of the loan universe with the higher rates) predictably prepay faster, especially in GNMA space.

**Figure 5a: Outsized rates (OR) FNMA**



**Figure 5b: Outsized rates (OR) GNMA FHA**

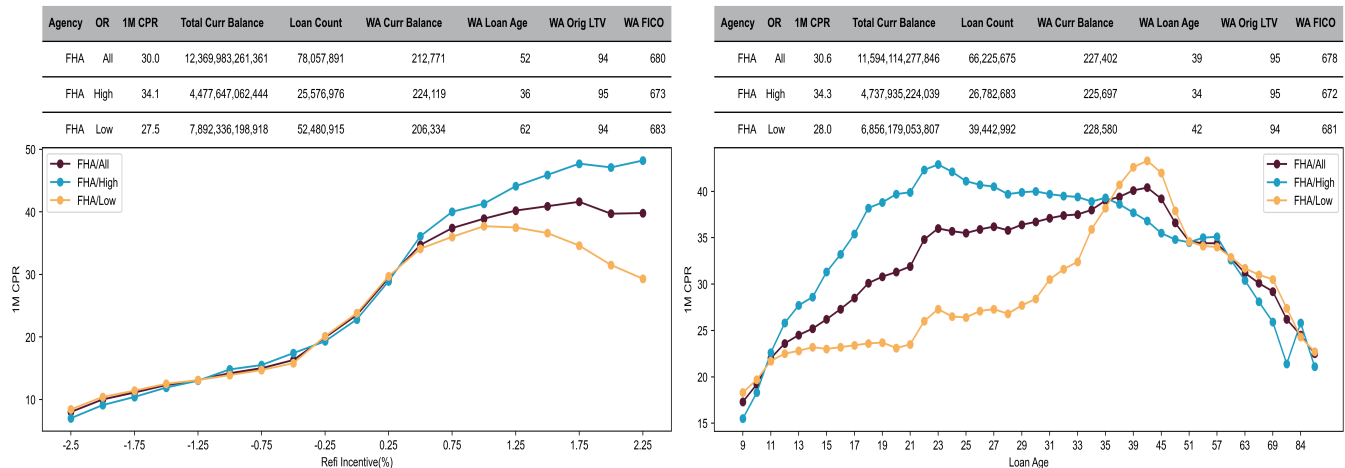
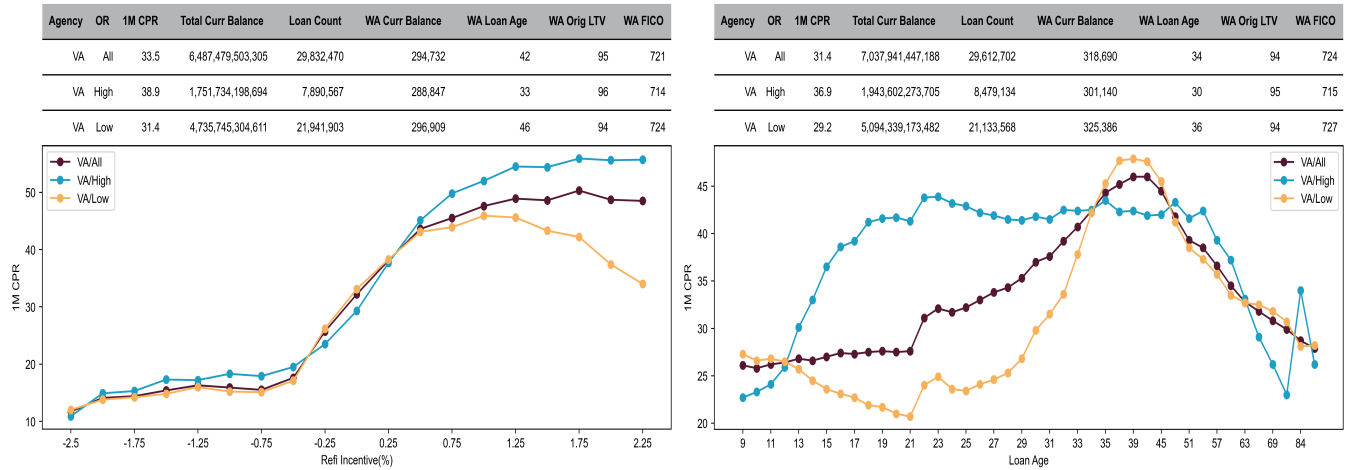


Figure 5c: Outsized rates (OR) GNMA VA



The risky lending charts below show faster prepayment for GNMA high score cohorts. This effect is less pronounced for FNMA cohorts, which reflects known, inherent different characteristics of FNMA and GNMA collateral.

Figure 5d: Risky lending (RL) FNMA

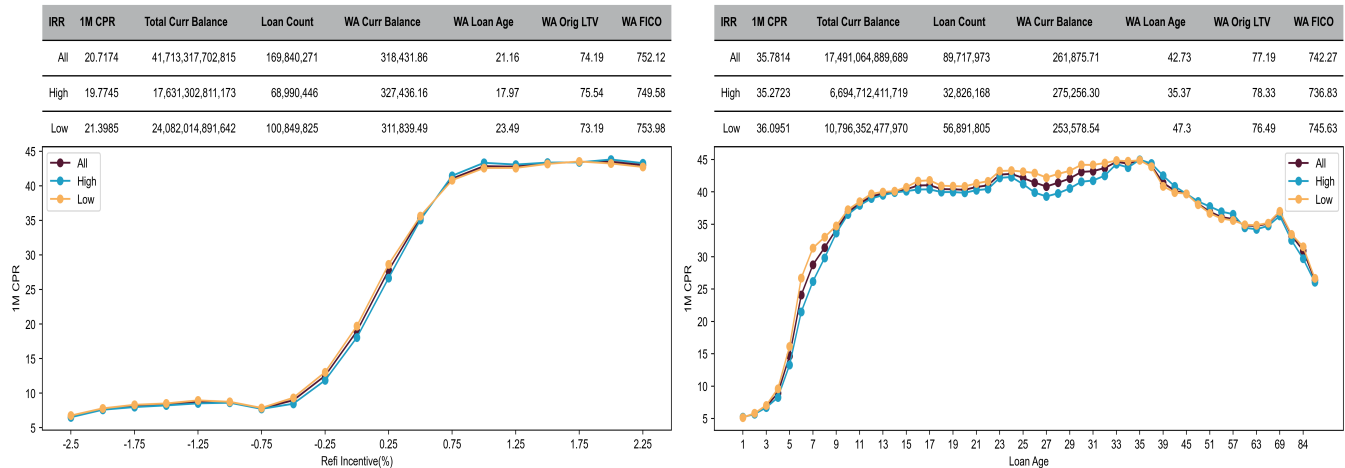
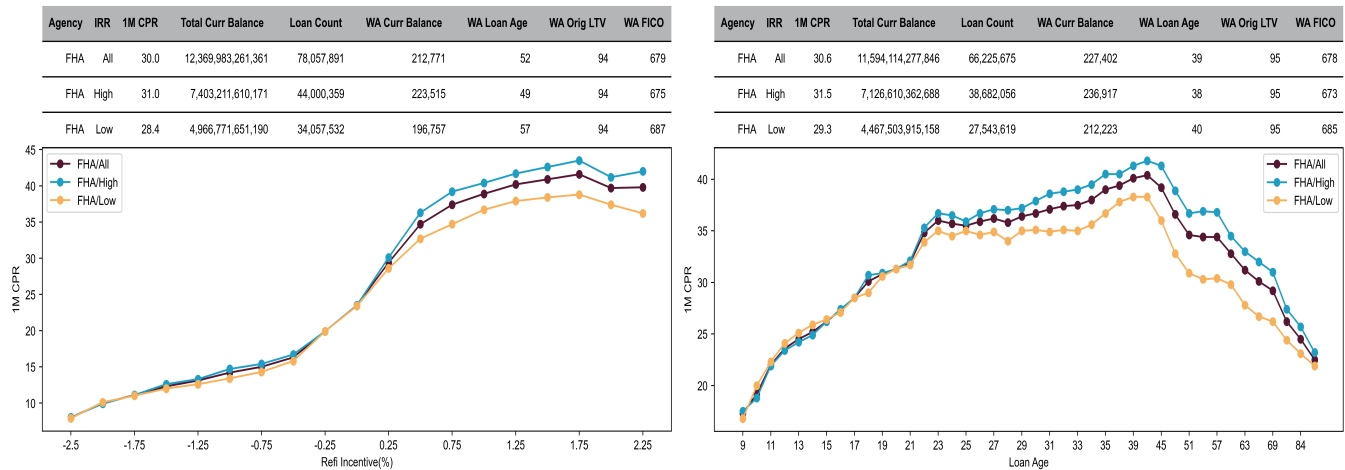
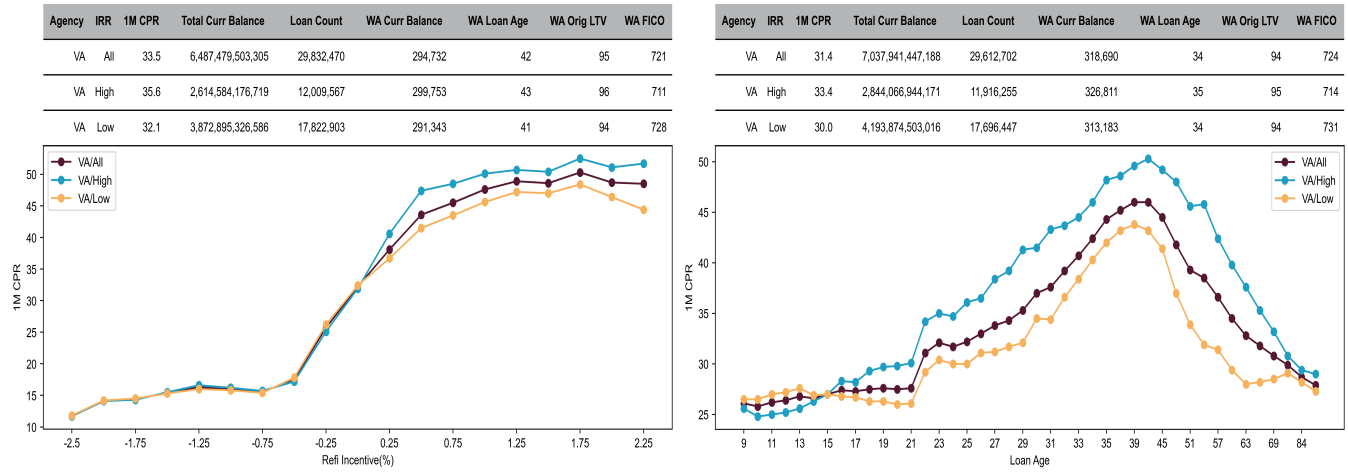


Figure 5e: Risky lending (RL) GNMA FHA



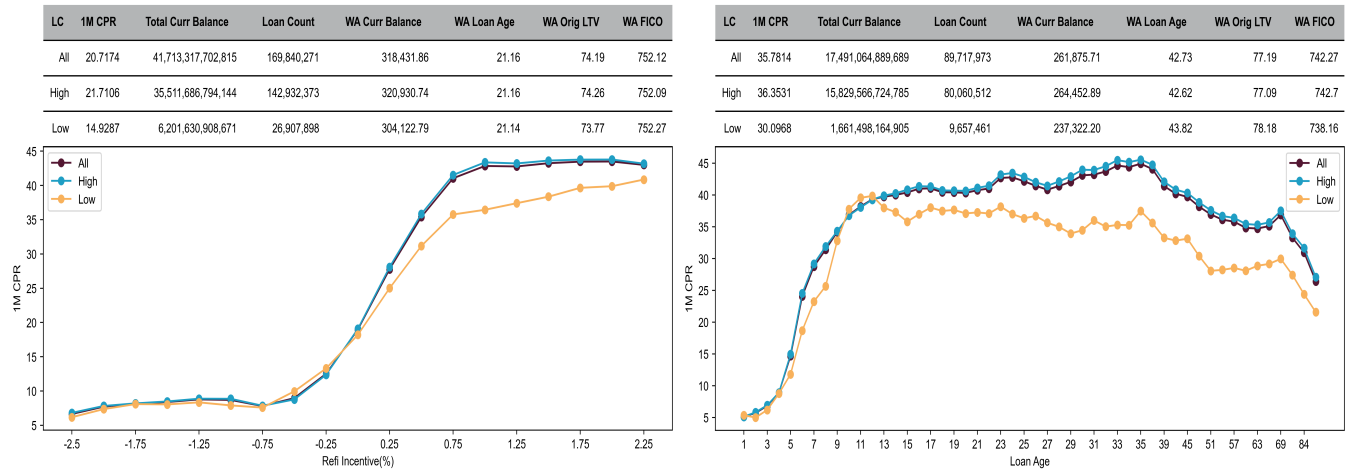
**Figure 5f: Risky lending (RL) GNMA VA**



**Figure 6: Responsible servicing metrics**

In line with our expectations, the charts show that cohorts with higher loan churn and relative default rate scores prepay faster than the corresponding lower score cohorts.

**Figure 6a: Loan churn (LC) FNMA**



**Figure 6b: Loan churn (LC) GNMA FHA**

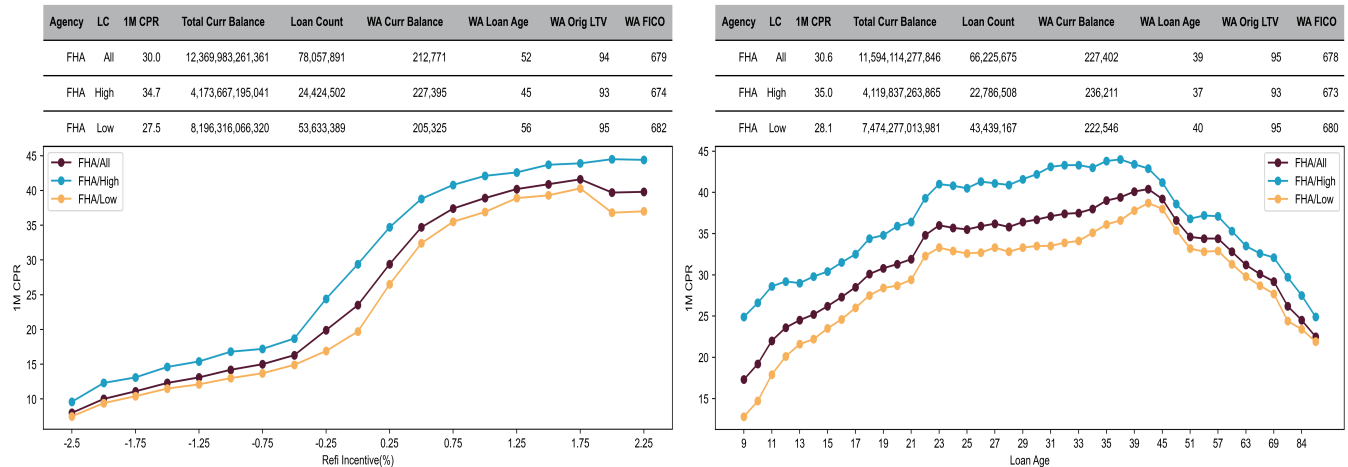




Figure 6b: Loan churn (LC) GNMA VA

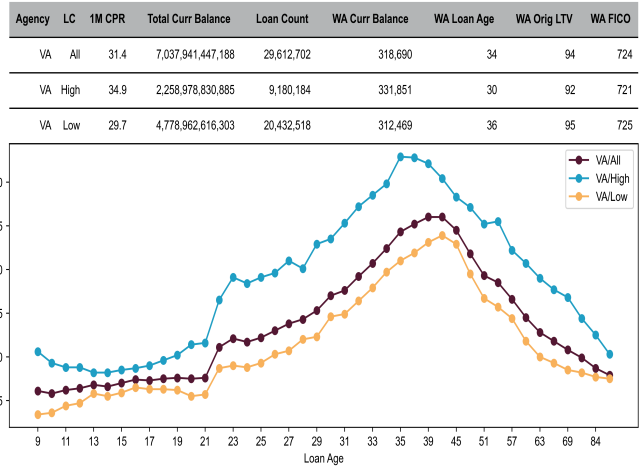
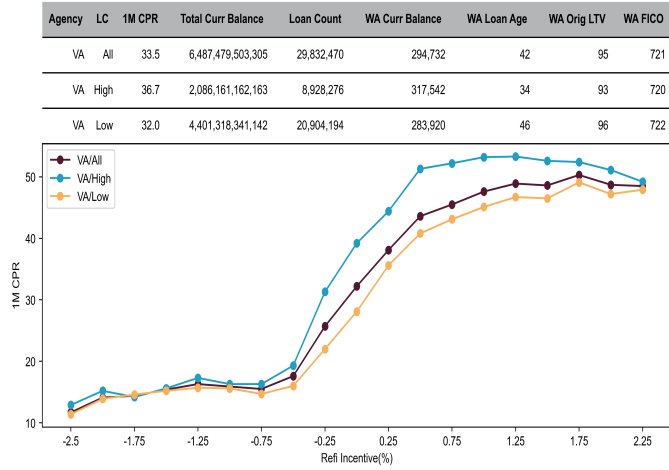


Figure 6c: Relative default rate (RDR) GNMA FHA

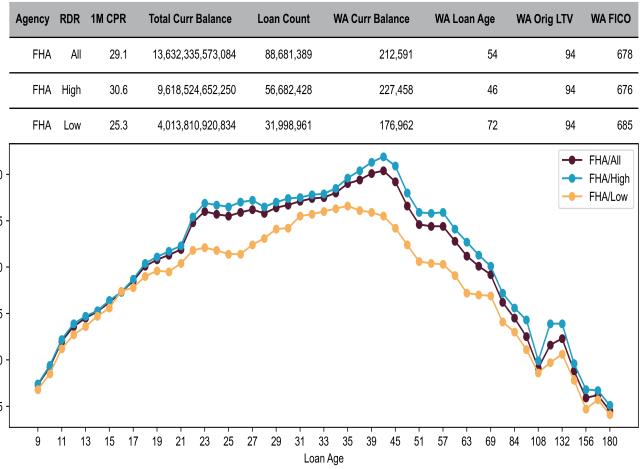
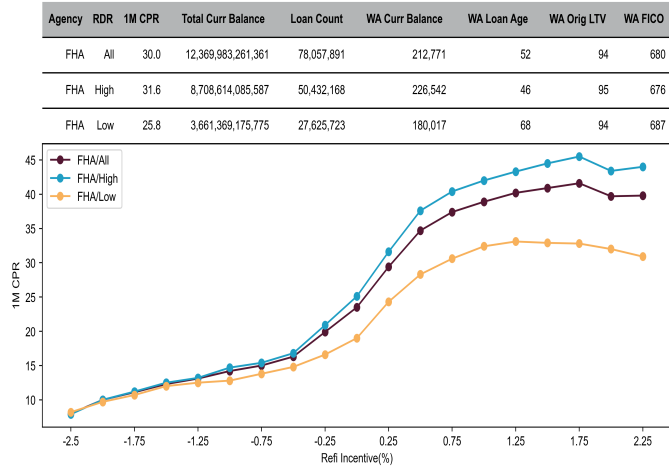
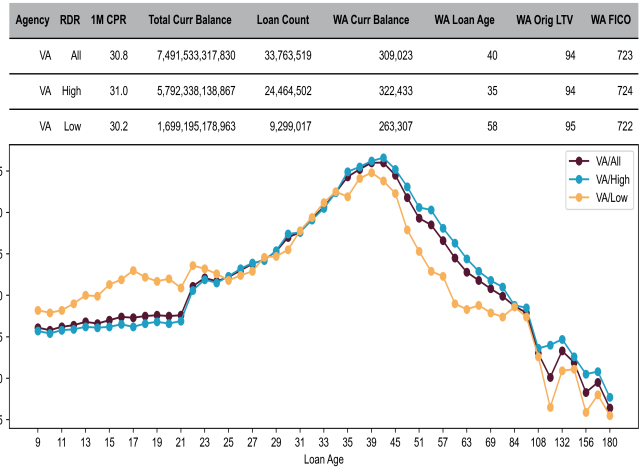
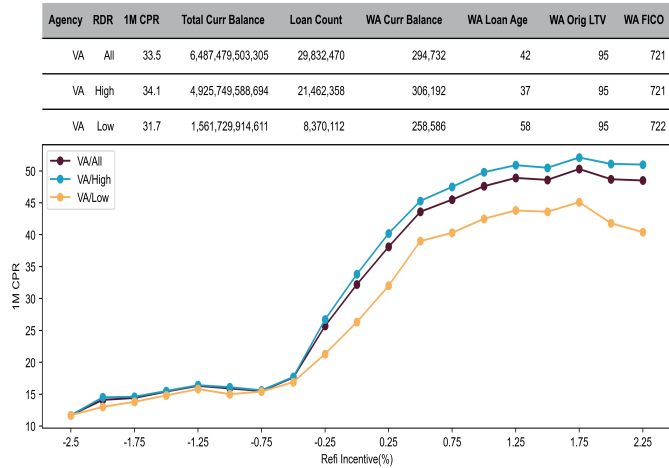
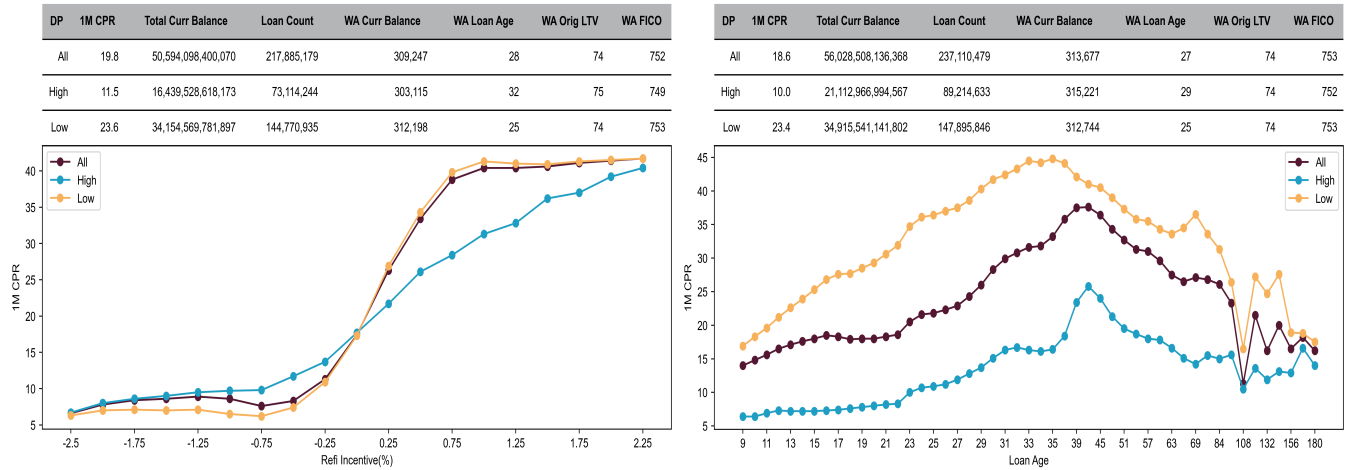


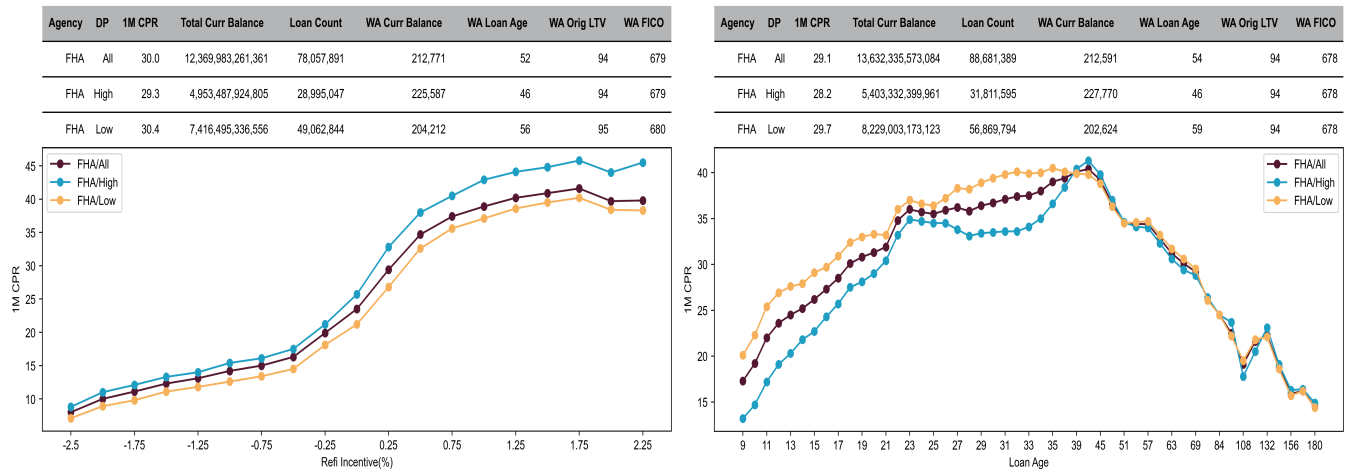
Figure 6c: Relative default rate (RDR) GNMA VA



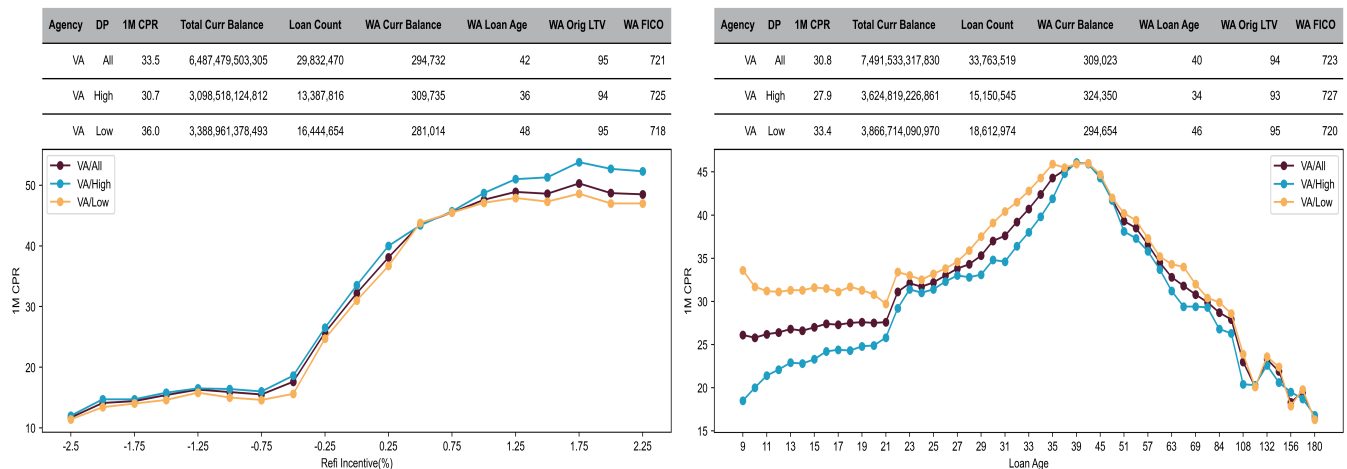
**Figure 6c: Delinquency policy (DP) FNMA**



**Figure 6c: Delinquency policy (DP) GNMA FHA**



**Figure 6c: Delinquency policy (DP) GNMA VA**



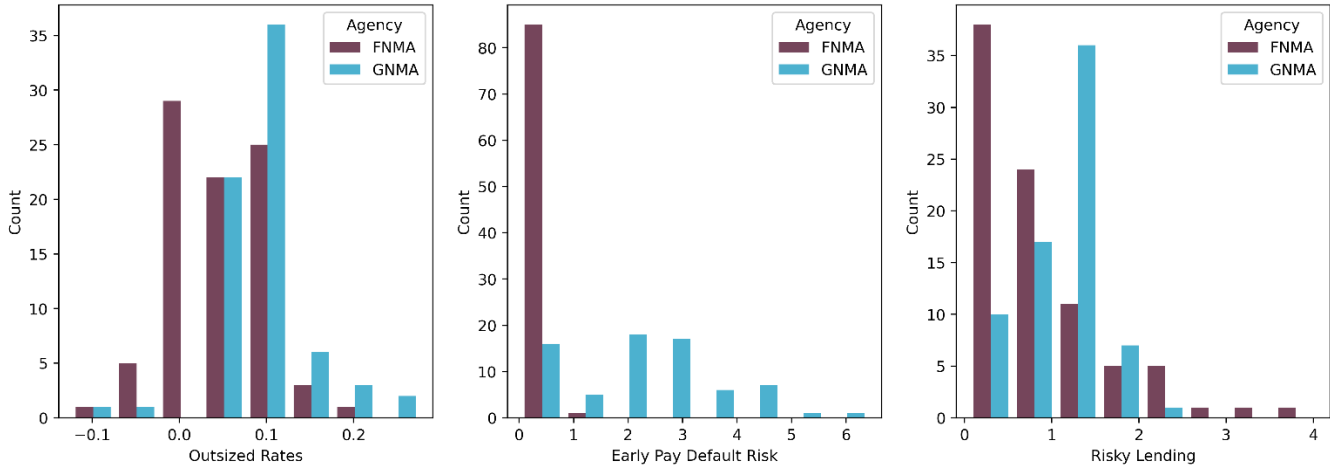
For the delinquency policy metric, a higher score means that servicers do a better job of mitigating borrower delinquency and avoiding foreclosures. Consequently, the seasoning charts show that high-score cohorts prepay more slowly than lower-score cohorts for both GNMA and FNMA, with the effect being more pronounced for FNMA.

# Metric distribution and CPR regression by entity

## Responsible lending metrics

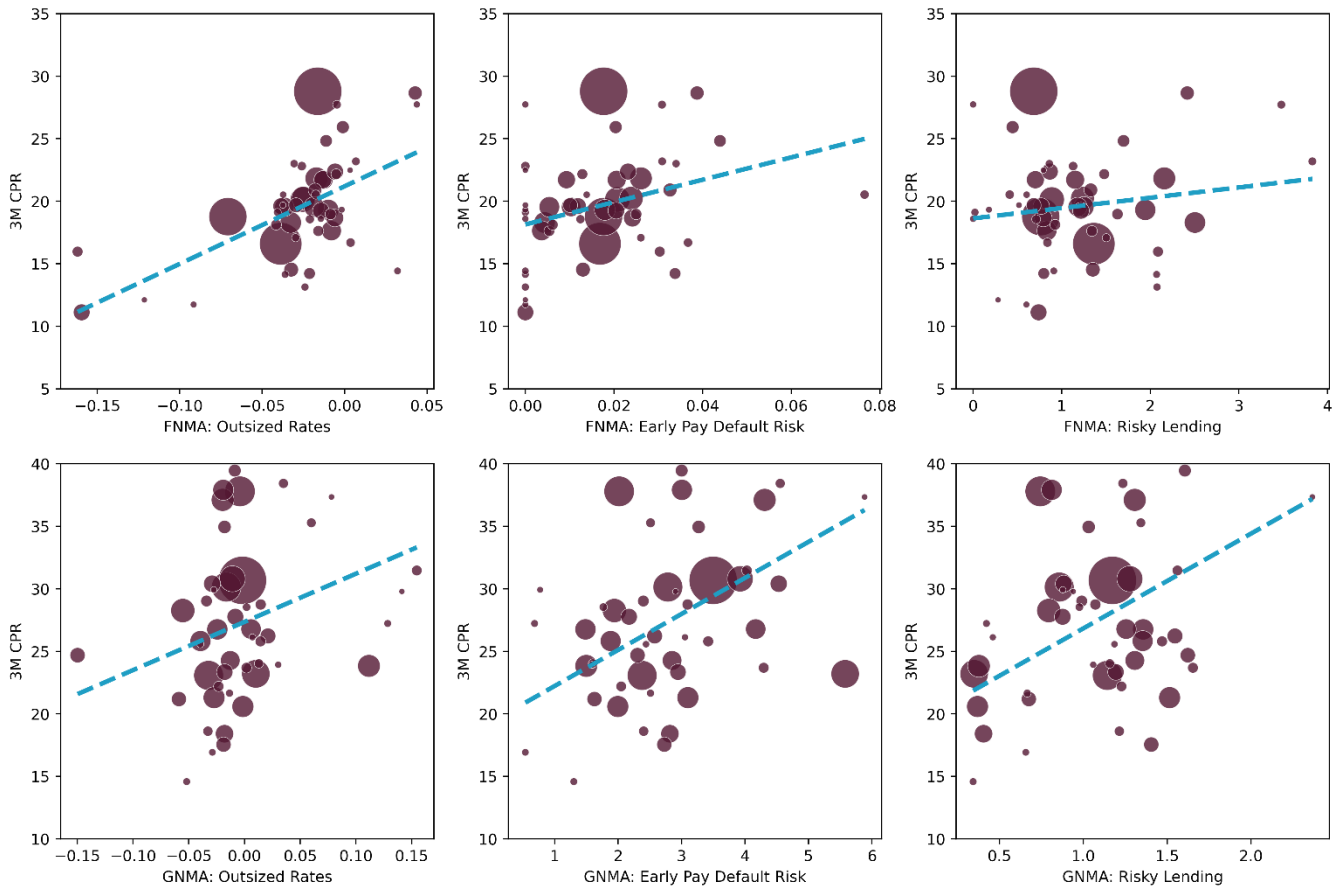
We present individual 12-month weighted average metric scores from the selected top lenders as of December 2020 below. Due to broader underwriting guidelines, the distribution for GNMA lenders is more right-skewed than the corresponding distributions for FNMA and FHLMC.

Figure 7: Histogram of RL ESG scores by lender



We plot three-month prepayment speeds (3m CPR) against each ESG metric by lender. In the analysis, we include loans originated in 2020 by the selected top sellers. Three-month CPR is calculated as of December 2021. The size of each circle represents the outstanding balance of the lender.

Figure 8: Correlation of CPR to RL ESG metrics FNMA and GNMA



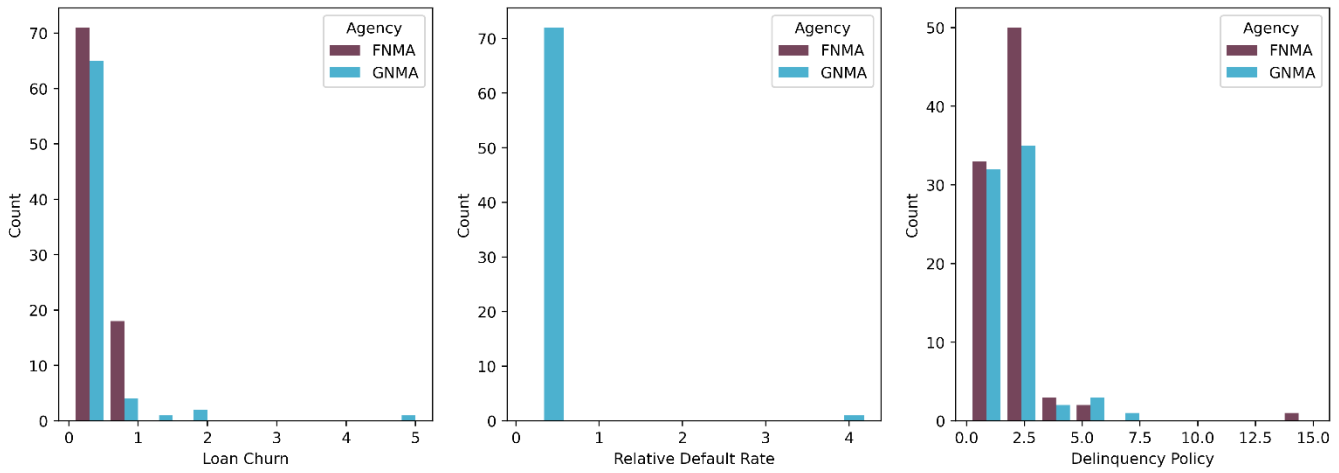
For outsized rates, a high score indicates the loan was made by a lender who systematically originates loans with rates higher than can be explained by the loan’s characteristics and the prevailing market rate. The results above align with our hypothesis that loans with high outsized rates should prepay faster.

In the coming months, we want to extend this analysis to include a study of the involuntary vs. voluntary prepayment speeds for ESG cohorts for all agencies.

## Responsible lending metrics

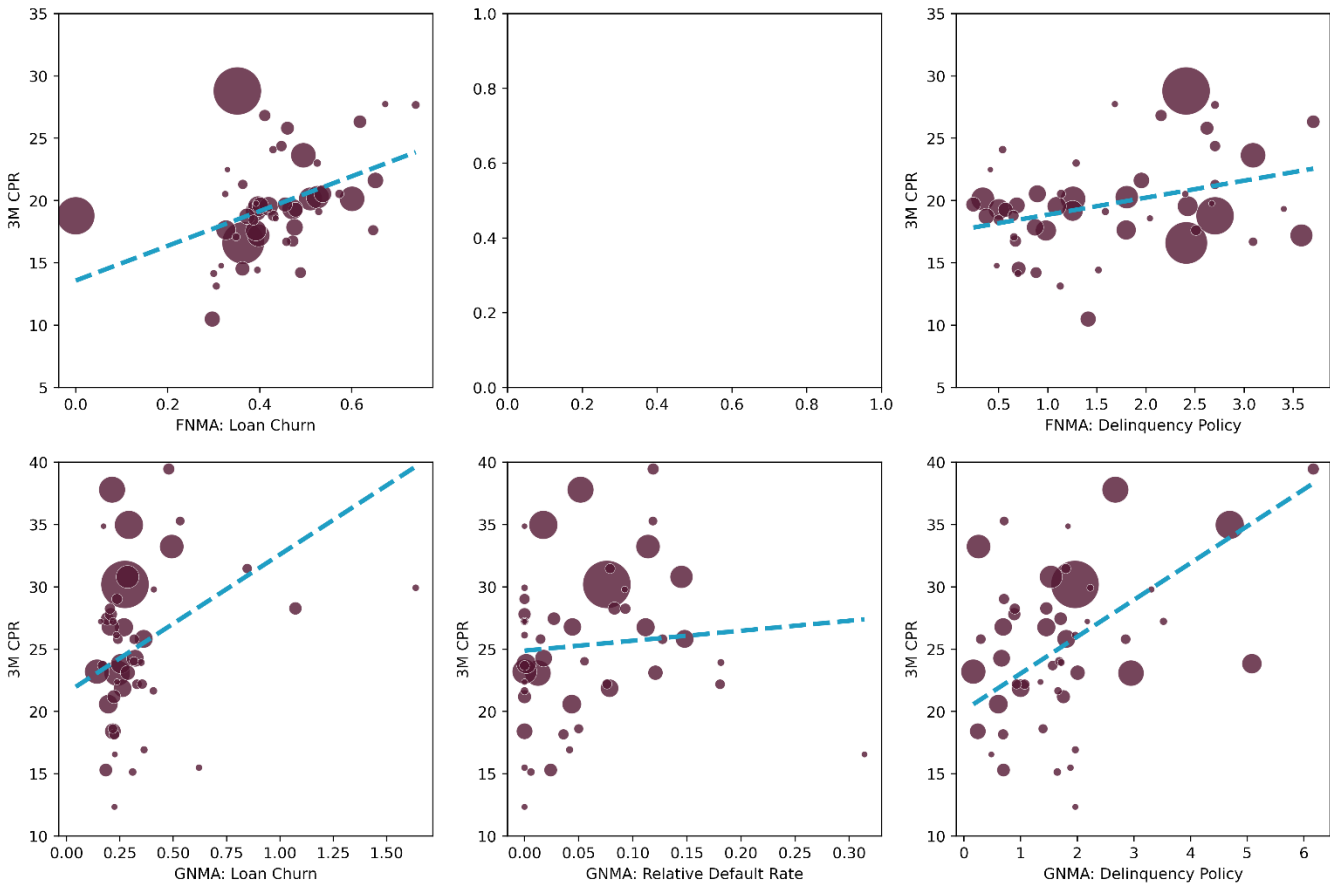
We show individual 12-month weighted average metric scores from the selected top servicers as of December 2021 below.

**Figure 9: Histogram of RS ESG scores by lender**



We plot three-month prepayment speeds (3m CPR) against each ESG metric by servicer. In the analysis, we include loans originated in 2021 by the selected top servicers. 3m CPR is calculated as of December 2021. The size of each circle represents the outstanding balance of the servicer.

**Figure 10: Correlation of CPR to RS ESG metrics FNMA and GNMA**



For loan churn, a higher score means the servicers are actively encouraging borrowers to refinance repeatedly. This will naturally drive up the prepayment speed.

## Conclusion

In summary, our findings indicate three critical outcomes:

- Four out of the five ESG metrics used in the prepayment study demonstrated consistent behavior in terms of relative prepayment speeds for high and low ESG cohorts. The fifth metric, delinquency policy, followed our expectations for the seasoning curve and only slightly deviated from the other ESG cohorts at the higher incentive rates end of the S-curve.
- In the total return study, three out of the four ESG metrics showed higher average returns during the period under consideration. The only easily explainable exception was the outsized rates metric.
- The correlation of speeds vs ESG metrics study also demonstrated stable and consistent non-negative correlations.

These results suggest that the use of Yield Book-developed ESG scoring metrics would not only enable responsible investing but could also enhance the performance of MBS portfolio.

## About Yield Book

Yield Book is a trusted and authoritative source for fixed income analytics that enables market makers and institutional investors to perform complex analysis of their portfolios, benchmarks, trading decisions, historical performance, and risk. Yield Book products offer analytical insight into an extensive range of financial products in the fixed income space including governments, agencies, corporates, high yield, emerging markets, mortgages, ABS, CMBS, CMOs, CLOs, and derivatives. The platform utilizes dedicated centralized servers that help ensure reliable, prompt data delivery. Yield Book forms part of London Stock Exchange Group's Data and Analytics Division.

To learn more, contact us at [sales@yieldbook.com](mailto:sales@yieldbook.com) or visit our website: [solutions.yieldbook.com](https://solutions.yieldbook.com)

### Americas

+1 646 989 2200

### EMEA

+44 20 7334 8963

### Asia-Pacific

Hong Kong +852 2164 3333

Tokyo +81 3 6441 1015

Taipei +866 2 8979 4966

© 2023 London Stock Exchange Group plc and its applicable group undertakings (the "LSE Group"). The LSE Group includes (1) FTSE International Limited ("FTSE"), (2) Frank Russell Company ("Russell"), (3) FTSE Global Debt Capital Markets Inc. and FTSE Global Debt Capital Markets Limited (together, "FTSE Canada"), (4) MTSNext Limited ("MTSNext"), (5) Mergent, Inc. ("Mergent"), (6) FTSE Fixed Income LLC ("FTSE FI"), (7) The Yield Book Inc ("YB") and (8) Beyond Ratings S.A.S. ("BR"). All rights reserved.

FTSE Russell® is a trading name of FTSE, Russell, FTSE Canada, MTSNext, Mergent, FTSE FI, YB and BR. "FTSE®", "Russell®", "FTSE Russell®", "MTS®", "FTSE4Good®", "ICB®", "Mergent®", "The Yield Book®", "Beyond Ratings®" and all other trademarks and service marks used herein (whether registered or unregistered) are trademarks and/or service marks owned or licensed by the applicable member of the LSE Group or their respective licensors and are owned, or used under licence, by FTSE, Russell, MTSNext, FTSE Canada, Mergent, FTSE FI, YB or BR. FTSE International Limited is authorized and regulated by the Financial Conduct Authority as a benchmark administrator.

All information is provided for information purposes only. All information and data contained in this publication is obtained by the LSE Group, from sources believed by it to be accurate and reliable. Because of the possibility of human and mechanical error as well as other factors, however, such information and data is provided "as is" without warranty of any kind. No member of the LSE Group nor their respective directors, officers, employees, partners or licensors make any claim, prediction, warranty or representation whatsoever, expressly or impliedly, either as to the accuracy, timeliness, completeness, merchantability of any information or of results to be obtained from the use of FTSE Russell products, including but not limited to indexes, data and analytics, or the fitness or suitability of the FTSE Russell products for any particular purpose to which they might be put. Any representation of historical data accessible through FTSE Russell products is provided for information purposes only and is not a reliable indicator of future performance.

No responsibility or liability can be accepted by any member of the LSE Group nor their respective directors, officers, employees, partners or licensors for (a) any loss or damage in whole or in part caused by, resulting from, or relating to any error (negligent or otherwise) or other circumstance involved in procuring, collecting, compiling, interpreting, analyzing, editing, transcribing, transmitting, communicating or delivering any such information or data or from use of this document or links to this document or (b) any direct, indirect, special, consequential or incidental damages whatsoever, even if any member of the LSE Group is advised in advance of the possibility of such damages, resulting from the use of, or inability to use, such information.

No member of the LSE Group nor their respective directors, officers, employees, partners or licensors provide investment advice, and nothing contained herein or accessible through FTSE Russell products, including statistical data and industry reports, should be taken as constituting financial or investment advice or a financial promotion.

Past performance is no guarantee of future results. Charts and graphs are provided for illustrative purposes only. Index returns shown may not represent the results of the actual trading of investable assets. Certain returns shown may reflect back-tested performance. All performance presented prior to the index inception date is back-tested performance. Back-tested performance is not actual performance but is hypothetical. The back-test calculations are based on the same methodology that was in effect when the index was officially launched. However, back-tested data may reflect the application of the index methodology with the benefit of hindsight, and the historic calculations of an index may change from month to month based on revisions to the underlying economic data used in the calculation of the index.

This document may contain forward-looking assessments. These are based upon a number of assumptions concerning future conditions that ultimately may prove to be inaccurate. Such forward-looking assessments are subject to risks and uncertainties and may be affected by various factors that may cause actual results to differ materially. No member of the LSE Group nor their licensors assume any duty to and do not undertake to update forward-looking assessments.

No part of this information may be reproduced, stored in a retrieval system or transmitted in any form or by any means, electronic, mechanical, photocopying, recording or otherwise, without prior written permission of the applicable member of the LSE Group. Use and distribution of the LSE Group data requires a licence from FTSE, Russell, FTSE Canada, MTSNext, Mergent, FTSE FI, YB, BR and/or their respective licensors.

TO THE EXTENT THAT ANY INDICATIVE PRICING INFORMATION IS PROVIDED HEREUNDER (THE "VALUATION") AS PART OF THE DATA AND/OR MODELS, SUCH VALUATION IS BEING PROVIDED AT CUSTOMER'S REQUEST FOR CUSTOMER'S INFORMATION PURPOSES ONLY AND IS NOT INTENDED AS AN OFFER OR SOLICITATION FOR PURCHASE OR SALE OF A SECURITY OR A CONTRACTUAL OBLIGATION (COLLECTIVELY, THE "FINANCIAL INSTRUMENTS"), INCLUDING THE FINANCIAL INSTRUMENTS SPECIFIED HEREIN. ANY VALUATION IS ONLY AN ESTIMATE AS OF THE DATE PROVIDED AND THE ACTUAL MARKET PRICE OF THE FINANCIAL INSTRUMENTS CAN BE DETERMINED ONLY WHEN AND IF EXECUTED IN THE MARKET; CONSEQUENTLY, ANY VALUATION MAY NOT REFLECT LEVELS AT WHICH: (A) ACTUAL TRANSACTIONS MAY OCCUR OR HAVE OCCURRED OR (B) COLLATERAL CALLS MAY BE MADE. THERE MAY BE NO OR MAY NOT HAVE BEEN ANY SECONDARY TRADING MARKET FOR ANY SUCH FINANCIAL INSTRUMENTS. ANY VALUATION MAY INCORPORATE INFORMATION FROM THE MOST ACTIVE MARKETS TO WHICH A SOURCE HAS ACCESS AND, CONSEQUENTLY, MAY NOT REPRESENT AN

ESTIMATE OF THE VALUE OF THE PARTICULAR FINANCIAL INSTRUMENT IN THE MOST ACTIVE MARKET TO WHICH OTHERS MAY HAVE ACCESS.

Any Valuation is only an estimate of LSE Group or third-party data providers as to the general value of the specified Financial Instruments, as of the dates indicated, and are subject to change at any time without notice. Each Valuation is only one view as to the estimated general value of a particular Financial Instrument at a particular point in time.

Any Valuation may take into account a number of factors including, but not limited to, any one or more of the following: (a) general interest rate and market conditions; (b) macroeconomic and/or deal-specific credit fundamentals; (c) valuations of other financial instruments which may be comparable in terms of rating, structure, maturity and/or covenant protection; (d) investor opinions about the respective deal parties; (e) size of the transaction; (f) cash flow projections, which in turn are based on assumptions about certain parameters that include, but are not limited to, default, recovery, prepayment and reinvestment rates; (g) administrator reports, asset manager estimates, broker quotations and/or trustee reports, and (h) comparable trades, where observable. LSE Group's view of these factors and assumptions may differ from other parties, and part of the valuation process may include the use of proprietary models. Any Valuation is based upon information derived from sources believed to be reliable; however, LSE Group have not independently verified such information. In addition, reports may be available only periodically and with a delay and accordingly, where any Valuation relies upon the most recently available information in such reports for a transaction, any Valuation may be based on information that may not be current as of the valuation date.

LSE Group is not acting as your advisor, agent or fiduciary in providing any Valuation to you. To the extent permitted by law, LSE Group expressly disclaim any responsibility for or liability (including, without limitation liability for any direct, punitive, incidental or consequential loss or damage, any act of negligence or breach of any warranty) relating to: (a) the accuracy of any models, market data input into such models or estimates used in deriving any Valuation, (b) any errors or omissions in computing or disseminating any Valuation, (c) any changes in market factors or conditions or any circumstances beyond LSE Group's control, and (d) any uses to which such Valuation is put. You are responsible for your own independent verification and should consult with your own auditors and other advisors with respect to any Valuation and before deciding the uses to which any Valuation may be put. Specifically, LSE Group does not assert that any Valuation is appropriate for the purposes of valuing particular Financial Instruments in your financial statements in accordance with the requirements of your local accounting framework (for example FASB Statement No. 157 "Fair Value Measurements" under US GAAP or International Accounting Standard No. 39 "Financial Instruments: Recognition and Measurement").

LSE Group and any third-party data provider may make a market in or engage in transactions in the Financial Instruments referred to herein. Any Valuation may be affected by those parties' own transactions and own quotations.