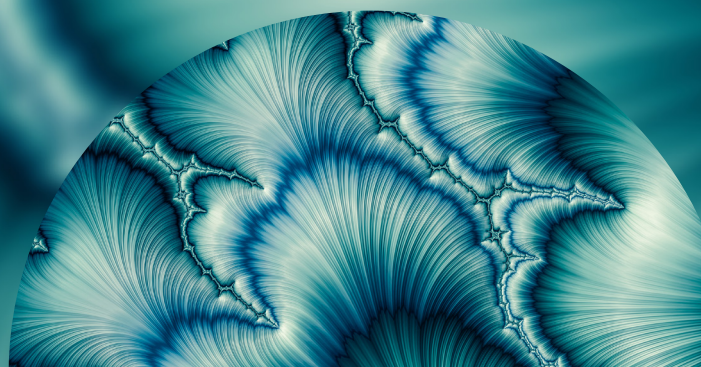


SOLUTION OVERVIEW

FTSE Environmental Markets Index Series



Indices for environmental opportunities

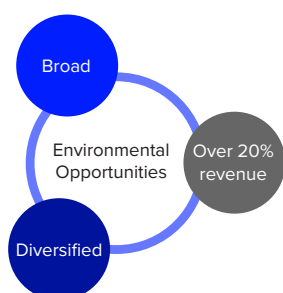
It is estimated that US\$90 trillion of infrastructure investment is needed by 2030 to avert more than 2 degrees of global warming since pre-industrial levels.¹ This large-scale capital deployment provides a significant and growing opportunity for investors who align their portfolios with the green economy.

Research by FTSE Russell has identified a large, growing and diversified “green” economy that currently represents over 8.6% of global listed equity markets – around US\$7 trillion in market capitalisation if considered as a standalone sector, the green economy would be the 4th largest sector in the global equity market, surpassing the energy, retail and banking industry.² However, it will require further acceleration to achieve global environmental objectives.³

Available indices

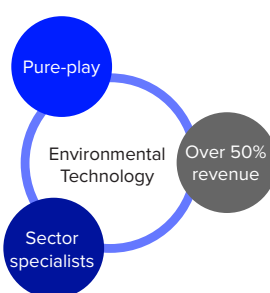
Based on the FTSE Russell Green Revenues Classification System (GRCS).

FTSE Environmental Opportunities Index Series



Supports investors seeking to invest in a range of companies that provide products and services that deliver solutions to environmental challenges.

FTSE Environmental Technology Index Series



Supports investors seeking to invest in pure-play companies whose core business is the development and deployment of environmental technologies.

¹ The Sustainable Infrastructure Imperative: Financing for Better Growth and Development, Global Commission on the Economy and Climate, October 2016

² Investing in the green economy 2024: Growing in a fractured landscape, FTSE Russell, July 2024

³ Investing in the green economy 2024: Growing in a fractured landscape, FTSE Russell, July 2024

Over a decade of history

Launched over a decade ago, the FTSE Environmental Markets Index Series provides investors with a focused way of defining and accessing the investment opportunities presented by the green economy.

This index series was developed in collaboration with Impax Asset Management and with input from the independent FTSE Russell Sustainable Investment Advisory Committee, which consists of senior and leading expert members from the investment community.

Features

FTSE Environmental Opportunities Index Series

- Measures the performance of a range of companies that have significant involvement in environmental business activities
- Companies are required to have at least 20% of their business revenues derived from environmental markets and technologies in order to be eligible

FTSE Environmental Technology Index Series

- Measures the performance of pure play companies whose core business is in the development and deployment of environmental technologies
- Companies are required to have at least 50% of their business revenues derived from environmental markets and technologies in order to be eligible






**FTSE
RUSSELL**
An LSEG Business

Green Revenues Classification System (GRCS)

The GRCS is used as a basis for the creation of the FTSE Environmental Markets indices. It identifies green products and services across the value chain, covering 10 sectors, 64 subsectors and 133 micro sectors.

ENERGY GENERATION EG	ENERGY EQUIPMENT EQ	ENERGY MANAGEMENT & EFFICIENCY EM	ENVIRONMENTAL RESOURCES ER	ENVIRONMENTAL SUPPORT SERVICES ES
Bio Fuels Cogeneration Clean Fossil Fuels Geothermal Hydro Nuclear Ocean & Tidal Solar Waste to Energy Wind	Bio Fuels Cogeneration Equipment Clean Fossil Fuels Fuel Cells Geothermal Hydro Nuclear Ocean & Tidal Solar Waste to Energy Wind	Buildings & Property (Integrated) Controls Energy Management Logistics & Support Industrial Processes IT Processes Lighting Power Storage Smart & Efficient Grids Sustainable Property Operator	Advanced & Light Materials Key Raw Minerals & Metals Recyclable Products & Materials	Environmental Consultancies Finance & Investment Smart City Design & Engineering
FOOD & AGRICULTURE FA	TRANSPORT EQUIPMENT TE	TRANSPORT SOLUTIONS TS	WASTE & POLLUTION CONTROL WP	WATER INFRASTRUCTURE & TECHNOLOGY WI
Agriculture Aquaculture Land Erosion Logistics Food Safety, Efficient Processing & Sustainable Packaging Sustainable Plantations	Aviation Railways Road Vehicles Shipping	Railways Operator Road Vehicles Video Conferencing	Advanced Irrigation Systems & Devices Desalination Flood Control Meteorological Solutions Natural Disaster Response Water Infrastructure Water Treatment Water Utilities	Cleaner Power Decontamination Services & Devices Environmental Testing & Gas Sensing Particles & Emission Reduction Devices Recycling Equipment Recycling Services Waste Management

Environmental impact

Tier 1	Tier 2	Tier 3
		
Clear and significant	Net positive	Limited

Tiering assessment

In order to assess net environmental impact of company activities, FTSE Russell evaluates each of the 133 activities (micro sectors) defined by the Green Revenues Classification System through the lens of seven environmental objectives and allocate them to three tiers of greenness. The tiering assessment allows users to assess exposure to various levels of green products and services and provides the basis of eligible activities for the FTSE Environmental Opportunities (EO) and Environmental Technology (ET) indices.

Index construction process

Starting universe

Start with the market capitalisation weighted underlying index from the FTSE Global Equity Index Series.

Step 1	
Environmental Opportunities (EO)	Map company activities to Green Revenues Classification System (GRCS) sectors. Generate at least 20% of Green Revenues from Tier 1 and Tier 2 activities (micro sectors). FTSE Environmental Opportunities Renewable & Alternative Energy Index: Eligible activities from Energy Generation and Energy Equipment sectors FTSE Environmental Opportunities Energy Efficiency Index: Eligible activities from the Energy Management & Efficiency sector FTSE Environmental Opportunities Waste and Pollution Control Index: Eligible activities from the Waste & Pollution Control sector FTSE Environmental Opportunities Water Technology Index: Eligible activities from the Water Infrastructure & Technology sector
Environmental Technology (ET)	Map company activities to GRCS sectors but with the following qualifications: To qualify for these indices companies' activities must generate at least 50% of Green Revenues from Tier 1 activities (micro sectors), excluding TS01.2 Electrified Railways.



Threshold analysis

Environmental Opportunities	To qualify for this index series companies must derive at least 20% of their revenues from eligible GRCS sectors.
Environmental Technology	To qualify for this index series companies must derive at least 50% of their revenues from eligible GRCS sectors. These activities must demonstrate environmental benefits.



Narrow index and constrain final weights

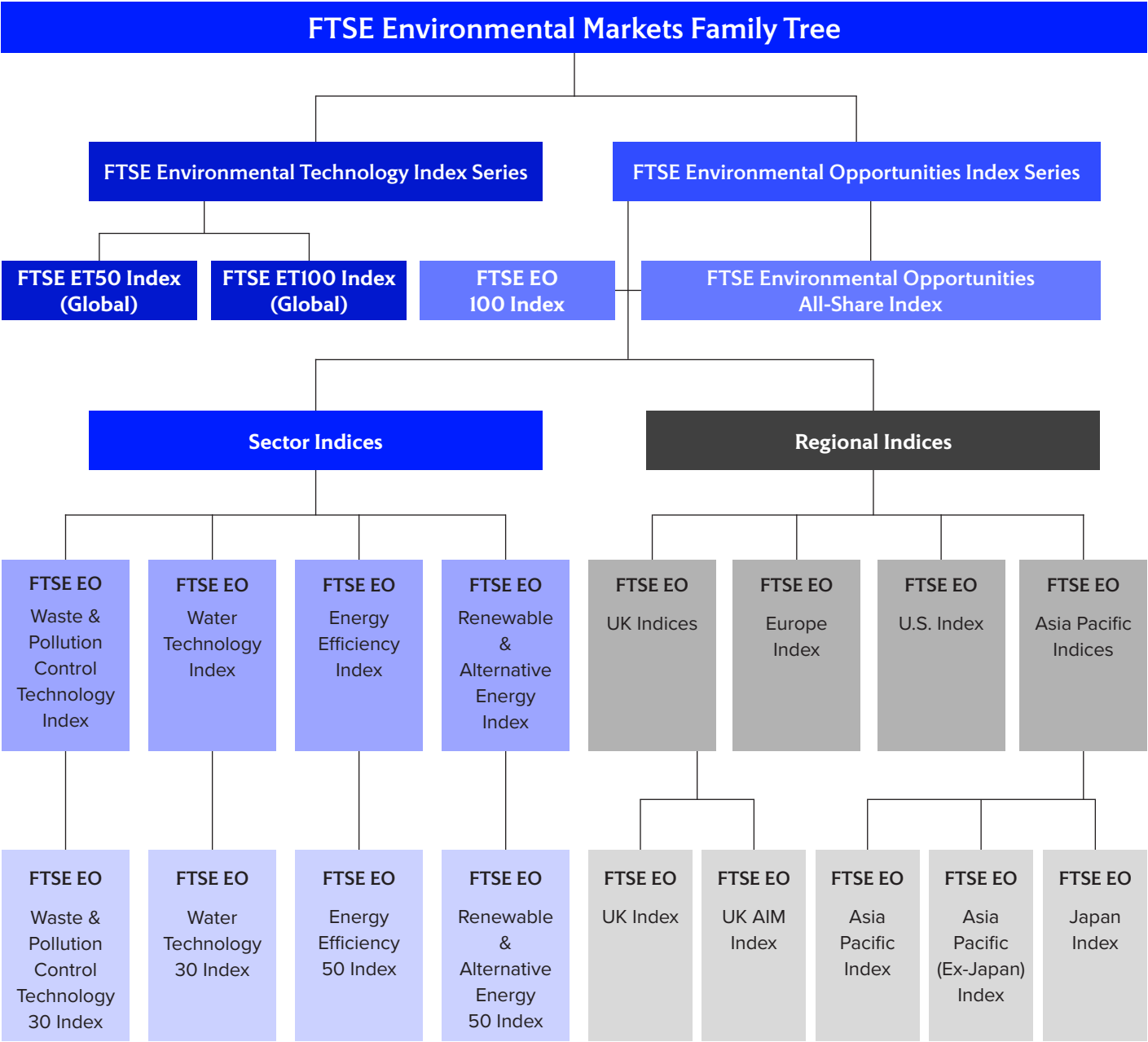
The indices apply UCITS capping which starts at 10% to reduce concentration in large constituents.



Publish and review index

The indices are reviewed semi-annually in June and December.
15% deletion threshold applies for EO indices 40% deletion threshold applies for ET indices.

An environmental family of indices



Disclaimer

© 2025 London Stock Exchange Group plc and its applicable group undertakings (the "LSE Group"). The LSE Group includes (1) FTSE International Limited ("FTSE"), (2) Frank Russell Company ("Russell"), (3) FTSE Global Debt Capital Markets Inc. and FTSE Global Debt Capital Markets Limited (together, "FTSE Canada"), (4) FTSE Fixed Income Europe Limited ("FTSE FI Europe"), (5) FTSE Fixed Income LLC ("FTSE FI"), (6) The Yield Book Inc ("YB") and (7) Beyond Ratings S.A.S. ("BR"). All rights reserved.

FTSE Russell® is a trading name of FTSE, Russell, FTSE Canada, FTSE FI, FTSE FI Europe, YB and BR. "FTSE", "Russell", "FTSE Russell", "FTSE4Good", "ICB", "The Yield Book", "Beyond Ratings" and all other trademarks and service marks used herein (whether registered or unregistered) are trademarks and/or service marks owned or licensed by the applicable member of the LSE Group or their respective licensors and are owned, or used under licence, by FTSE, Russell, FTSE Canada, FTSE FI, FTSE FI Europe, YB or BR. FTSE International Limited is authorised and regulated by the Financial Conduct Authority as a benchmark administrator.

All information is provided for information purposes only. All information and data contained in this publication is obtained by the LSE Group, from sources believed by it to be accurate and reliable. Because of the possibility of human and mechanical error as well as other factors, however, such information and data is provided "as is" without warranty of any kind. No member of the LSE Group nor their respective directors, officers, employees, partners or licensors make any claim, prediction, warranty or representation whatsoever, expressly or impliedly, either as to the accuracy, timeliness, completeness, merchantability of any information or of results to be obtained from the use of FTSE Russell products, including but not limited to indexes, data and analytics, or the fitness or suitability of the FTSE Russell products for any particular purpose to which they might be put. Any representation of historical data accessible through FTSE Russell products is provided for information purposes only and is not a reliable indicator of future performance.

No responsibility or liability can be accepted by any member of the LSE Group nor their respective directors, officers, employees, partners or licensors for (a) any loss or damage in whole or in part caused by, resulting from, or relating to any error (negligent or otherwise) or other circumstance involved in procuring, collecting, compiling, interpreting, analysing, editing, transcribing, transmitting, communicating or delivering any such information or data or from use of this document or links to this document or (b) any direct, indirect, special, consequential or incidental damages whatsoever, even if any member of the LSE Group is advised in advance of the possibility of such damages, resulting from the use of, or inability to use, such information.

No member of the LSE Group nor their respective directors, officers, employees, partners or licensors provide investment advice and nothing in this document should be taken as constituting financial or investment advice. No member of the LSE Group nor their respective directors, officers, employees, partners or licensors make any representation regarding the advisability of investing in any asset or whether such investment creates any legal or compliance risks for the investor. A decision to invest in any such asset should not be made in reliance on any information herein. Indexes cannot be invested in directly. Inclusion of an asset in an index is not a recommendation to buy, sell or hold that asset nor confirmation that any particular investor may lawfully buy, sell or hold the asset or an index containing the asset. The general information contained in this publication should not be acted upon without obtaining specific legal, tax, and investment advice from a licensed professional.

The information contained in this report should not be considered "research" as defined in recital 28 of the Commission Delegated Directive (EU) 2017/593 of 7 April 2016 supplementing Directive 2014/65/EU of the European Parliament and of the Council ("MiFID II") and is provided for no fee.

Past performance is no guarantee of future results. Charts and graphs are provided for illustrative purposes only. Index returns shown may not represent the results of the actual trading of investable assets. Certain returns shown may reflect back-tested performance. All performance presented prior to the index inception date is back-tested performance. Back-tested performance is not actual performance, but is hypothetical. The back-test calculations are based on the same methodology that was in effect when the index was officially launched. However, back-tested data may reflect the application of the index methodology with the benefit of hindsight, and the historic calculations of an index may change from month to month based on revisions to the underlying economic data used in the calculation of the index.

This document may contain forward-looking assessments. These are based upon a number of assumptions concerning future conditions that ultimately may prove to be inaccurate. Such forward-looking assessments are subject to risks and uncertainties and may be affected by various factors that may cause actual results to differ materially. No member of the LSE Group nor their licensors assume any duty to and do not undertake to update forward-looking assessments.

No part of this information may be reproduced, stored in a retrieval system or transmitted in any form or by any means, electronic, mechanical, photocopying, recording or otherwise, without prior written permission of the applicable member of the LSE Group. Use and distribution of the LSE Group data requires a licence from FTSE, Russell, FTSE Canada, FTSE FI, FTSE FI Europe, YB, BR and/or their respective licensors.

About FTSE Russell

FTSE Russell is a leading global provider of index and benchmark solutions, spanning diverse asset classes and investment objectives. As a trusted investment partner we help investors make better-informed investment decisions, manage risk, and seize opportunities.

Market participants look to us for our expertise in developing and managing global index solutions across asset classes. Asset owners, asset managers, ETF providers and investment banks choose FTSE Russell solutions to benchmark their investment performance and create investment funds, ETFs, structured products, and index-based derivatives. Our clients use our solutions for asset allocation, investment strategy analysis and risk management, and value us for our robust governance process and operational integrity.

For over 35 years we have been at the forefront of driving change for the investor, always innovating to shape the next generation of benchmarks and investment solutions that open up new opportunities for the global investment community.

To learn more, visit lse.com/ftse-russell; email info@ftserussell.com; or call your regional Client Service team office:

EMEA +44 (0) 20 7866 1810

North America +1 877 503 6437

Asia-Pacific

Hong Kong +852 2164 3333

Tokyo +81 (3) 6441 1430

Sydney +61 (0)2 7228 5659



**FTSE
RUSSELL**
An LSEG Business