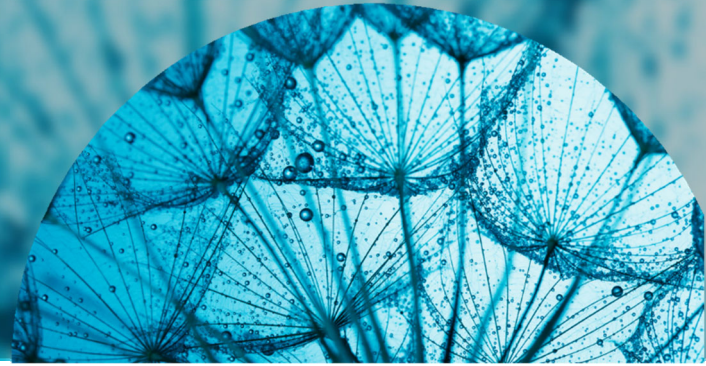


# ESG评级和数据模型

投资中融入ESG考量



## 概览

投资者越来越将环境、社会和治理（ESG）因素考量到核心基准和被动投资中。富时罗素拥有近二十年的ESG经验，提供涵盖全球数以千计公司的相关数据分析、评级和指数。

富时罗素的ESG评级和数据模型为需要灵活的数据解决方案实现以下目标的投资者提供相关工具：

- 协助管理ESG方面的敞口
- 满足法定尽责管理的要求
- 将ESG数据整合至证券和投资组合分析
- 实施具有ESG考量的投资策略

## 透明客观的ESG评级



## 特色

### 全面性

评级通过在线数据模型获取，涵盖47个发达和新兴市场的约7,200只证券，包括富时环球指数、富时全股指数和罗素1000®指数的成分股。

### 灵活性和定制

通过数据模型轻松提取多层次ESG数据，以便以多种方式评估和应用。

### 强调重要性

通过对风险敞口的单独衡量标准，用户可以确定哪些ESG问题与特定公司最具相关性。

### 符合联合国可持续发展目标

支持与联合国可持续发展目标 (SDG) 保持一致。所有17个可持续发展目标均反映在ESG框架下的14个主题中。

### 精确规则和专注于数据

通过对评估和评级公司制定非常明确的规则，最大程度减少主观性。ESG评级基于公开可用的数据。

### 强有力的治理

由投资界、企业界、非政府组织、工会和学术界的专家组成独立外部委员会负责监督。



## ESG评级：数据结构

ESG评级和数据模型使投资者能够从多个维度了解一家公司对ESG问题的风险敞口和管理。ESG评级通过基础支柱和主题的风险敞口和评分汇总为整体评分。支柱和主题评估则是基于适用于每家公司的独特情况的、300多项单独指标的评估。



## 在实践中使用ESG评级

ESG评级可作为构建模块，以多种方式将ESG整合至投资中，包括主动型投资组合管理、基准构建和公司参与。

### 投资组合评估和经理尽职调查

在选择和评估资产管理公司时，机构投资者越来越多地评估他们如何将ESG因素整合至其流程。ESG评级有助于评估资产管理公司投资组合在ESG整合方面的范围、平均值和方差。

### 参与和尽责管理

作为尽责管理职责的一部分，越来越多的基金经理和养老基金正在就有关ESG实践与被投资公司进行交流。ESG评级提供了独立和客观的衡量标准，以识别有关公司的参与并跟踪进展。

### 风险管理

ESG评级使投资者能够识别ESG风险敞口最大的公司，并可与传统风险度量一起使用，提供补充视角。

### 研究与分析

不同ESG方面的风险和回报关系会有所不同。ESG评级为研究和分析提供了细化而全面的数据集，允许用户就如何整合ESG数据形成自己的观点。

### 定制基准

许多投资者需要量身定制基准，以反映其ESG偏好。ESG评级为创建定制指数提供了一个全面而灵活的工具，也可以与基本面或smart beta方法一起使用。

### 主动投资组合管理

ESG评级可用于协助定义投资范围的ESG资格标准，也可用于适合的量化或基本面模型。

## Disclaimer

© 2024 London Stock Exchange Group plc and its applicable group undertakings (the "LSE Group"). The LSE Group includes (1) FTSE International Limited ("FTSE"), (2) Frank Russell Company ("Russell"), (3) FTSE Global Debt Capital Markets Inc. and FTSE Global Debt Capital Markets Limited (together, "FTSE Canada"), (4) FTSE Fixed Income Europe Limited ("FTSE FI Europe"), (5) FTSE Fixed Income LLC ("FTSE FI"), (6) The Yield Book Inc ("YB") and (7) Beyond Ratings S.A.S. ("BR"). All rights reserved.

FTSE Russell® is a trading name of FTSE, Russell, FTSE Canada, FTSE FI, FTSE FI Europe, YB and BR. "FTSE®", "Russell®", "FTSE Russell®", "FTSE4Good®", "ICB®", "The Yield Book®", "Beyond Ratings®" and all other trademarks and service marks used herein (whether registered or unregistered) are trademarks and/or service marks owned or licensed by the applicable member of the LSE Group or their respective licensors and are owned, or used under licence, by FTSE, Russell, FTSE Canada, FTSE FI, FTSE FI Europe, YB or BR. FTSE International Limited is authorised and regulated by the Financial Conduct Authority as a benchmark administrator.

All information is provided for information purposes only. All information and data contained in this publication is obtained by the LSE Group, from sources believed by it to be accurate and reliable. Because of the possibility of human and mechanical error as well as other factors, however, such information and data is provided "as is" without warranty of any kind. No member of the LSE Group nor their respective directors, officers, employees, partners or licensors make any claim, prediction, warranty or representation whatsoever, expressly or impliedly, either as to the accuracy, timeliness, completeness, merchantability of any information or of results to be obtained from the use of FTSE Russell products, including but not limited to indexes, data and analytics, or the fitness or suitability of the FTSE Russell products for any particular purpose to which they might be put. Any representation of historical data accessible through FTSE Russell products is provided for information purposes only and is not a reliable indicator of future performance.

No responsibility or liability can be accepted by any member of the LSE Group nor their respective directors, officers, employees, partners or licensors for (a) any loss or damage in whole or in part caused by, resulting from, or relating to any error (negligent or otherwise) or other circumstance involved in procuring, collecting, compiling, interpreting, analysing, editing, transcribing, transmitting, communicating or delivering any such information or data or from use of this document or links to this document or (b) any direct, indirect, special, consequential or incidental damages whatsoever, even if any member of the LSE Group is advised in advance of the possibility of such damages, resulting from the use of, or inability to use, such information.

No member of the LSE Group nor their respective directors, officers, employees, partners or licensors provide investment advice and nothing in this document should be taken as constituting financial or investment advice. No member of the LSE Group nor their respective directors, officers, employees, partners or licensors make any representation regarding the advisability of investing in any asset or whether such investment creates any legal or compliance risks for the investor. A decision to invest in any such asset should not be made in reliance on any information herein. Indexes cannot be invested in directly. Inclusion of an asset in an index is not a recommendation to buy, sell or hold that asset nor confirmation that any particular investor may lawfully buy, sell or hold the asset or an index containing the asset. The general information contained in this publication should not be acted upon without obtaining specific legal, tax, and investment advice from a licensed professional.

The information contained in this report should not be considered "research" as defined in recital 28 of the Commission Delegated Directive (EU) 2017/593 of 7 April 2016 supplementing Directive 2014/65/EU of the European Parliament and of the Council ("MiFID II") and is provided for no fee.

Past performance is no guarantee of future results. Charts and graphs are provided for illustrative purposes only. Index returns shown may not represent the results of the actual trading of investable assets. Certain returns shown may reflect back-tested performance. All performance presented prior to the index inception date is back-tested performance. Back-tested performance is not actual performance, but is hypothetical. The back-test calculations are based on the same methodology that was in effect when the index was officially launched. However, back-tested data may reflect the application of the index methodology with the benefit of hindsight, and the historic calculations of an index may change from month to month based on revisions to the underlying economic data used in the calculation of the index.

This document may contain forward-looking assessments. These are based upon a number of assumptions concerning future conditions that ultimately may prove to be inaccurate. Such forward-looking assessments are subject to risks and uncertainties and may be affected by various factors that may cause actual results to differ materially. No member of the LSE Group nor their licensors assume any duty to and do not undertake to update forward-looking assessments.

No part of this information may be reproduced, stored in a retrieval system or transmitted in any form or by any means, electronic, mechanical, photocopying, recording or otherwise, without prior written permission of the applicable member of the LSE Group. Use and distribution of the LSE Group data requires a licence from FTSE, Russell, FTSE Canada, FTSE FI, FTSE FI Europe, YB, BR and/or their respective licensors.

## About FTSE Russell

FTSE Russell is a leading global provider of index and benchmark solutions, spanning diverse asset classes and investment objectives. As a trusted investment partner we help investors make better-informed investment decisions, manage risk, and seize opportunities.

Market participants look to us for our expertise in developing and managing global index solutions across asset classes. Asset owners, asset managers, ETF providers and investment banks choose FTSE Russell solutions to benchmark their investment performance and create investment funds, ETFs, structured products, and index-based derivatives. Our clients use our solutions for asset allocation, investment strategy analysis and risk management, and value us for our robust governance process and operational integrity.

For over 35 years we have been at the forefront of driving change for the investor, always innovating to shape the next generation of benchmarks and investment solutions that open up new opportunities for the global investment community.

To learn more, visit [lsegroup.com/ftse-russell](https://lsegroup.com/ftse-russell); email [info@ftserussell.com](mailto:info@ftserussell.com); or call your regional Client Service team office:

**EMEA** +44 (0) 20 7866 1810

**North America** +1 877 503 6437

**Asia-Pacific**

**Hong Kong** +852 2164 3333

**Tokyo** +81 (3) 6441 1430

**Sydney** +61 (0)2 7228 5659



**FTSE  
RUSSELL**  
An LSEG Business